



T0985

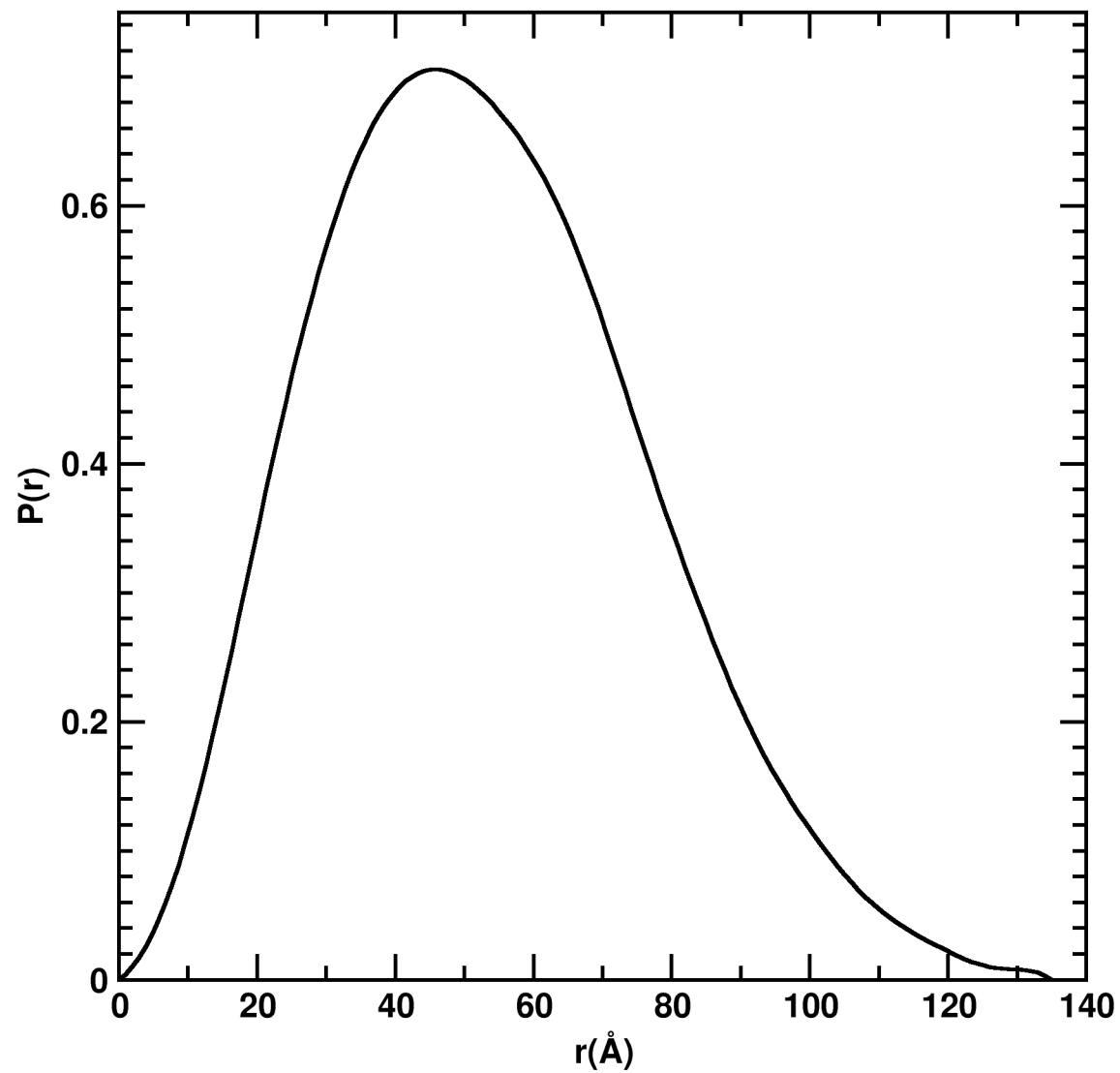
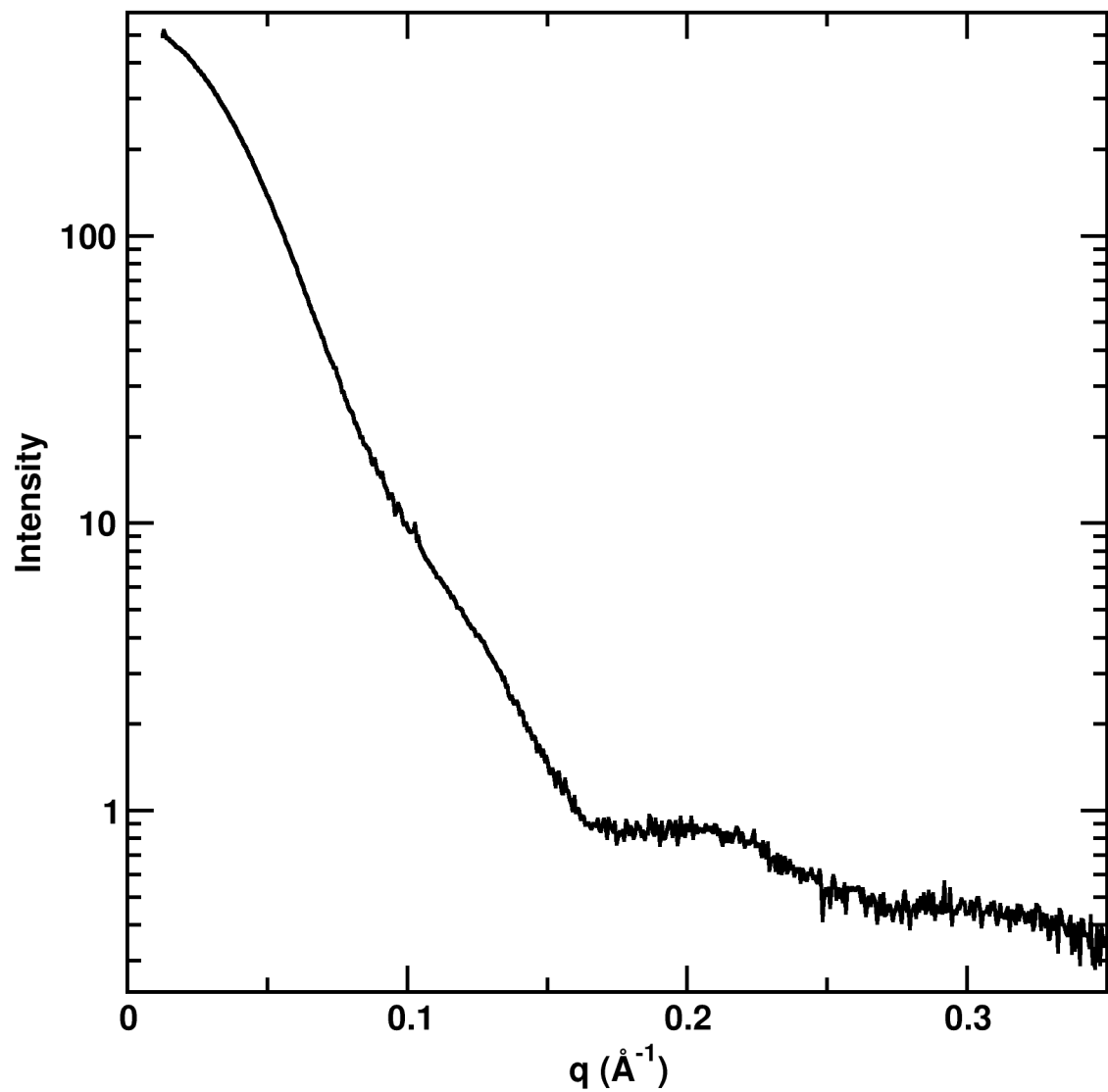
HT and SEC SAXS agree



Dimer of large protein

Sample: CASP Sample France			
Variable	Value	Error +/-	Units
Rg	41.0	1	Angstroms
Porod Exponent	4.0		Scale (2-4)
Mass SAXS	190	5	kDa
Max Dimension	136	3	Angstroms
Radius of Cross Section	32.6	1	Angstroms
Volume	35000	5,000	Cubic Angstroms
Real Space Rg	40.72	3	Angstroms

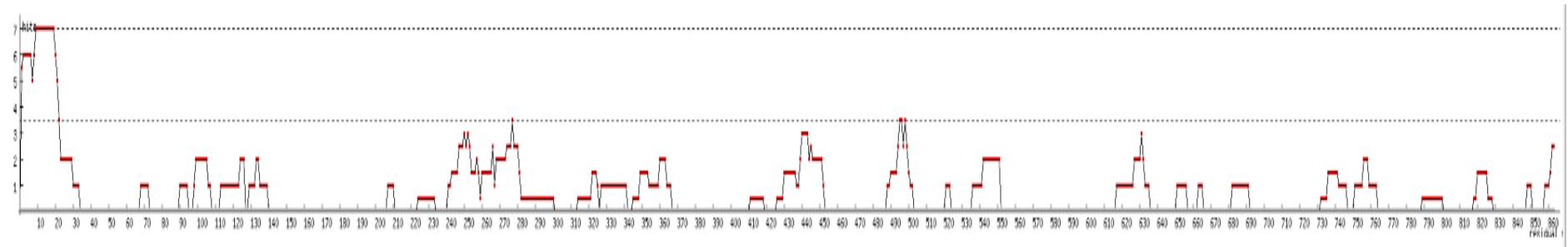
MAHHHHHHVGTGSNDDDDKSPMKLKQDVISIYQKISLFESGQLNITKLASGAYYLDELTLITDPVNSGARFPYAVNGMTIWAYASGYISINHSSYYILPPNLEGKEPFLDFFGIEQDGNNTYPV
SLLGVSERNDEIENKRYTVFSKNIAYYITVTKNFLYAVTVYISKDFKIYFNTVAHNLTGETKQITLSSFFNMLFKYDSGESIETKWFKKVSYENNMFIYDAPEDIDRHTRIENYGVVKRHLHTKPKNI
QNTTSRIDYVGKRYRSVRNALSIRSLKFEKAPLVNFTDTAINADLINYEVKAYDTIISYRIETCHDKDTLNKMMASDLTDKEIKKVYEGLSNTQSYDFDNFGISFKGVNDNRVDDKVLNQFLKL
VNYQIHFSSLSSNSGTVFLGVRDVMQQLESSLIWDRKNVRSKILEVLSFIDPSGLPPRQYALPPKEGNPRMDLRPFIDQGLWIISTLHTYLAYTEDYDILNEVCGYYERIEPNSAKSKSVENSVLE
HLIRVTNYLVSNIDPSTYGLKALYGDWNDALDGLGLIEGSSGYGNGVSVMATLQLYENLERMIEILKLVDPQNEHINTYEVVRHNLSLGINKYAVVIKQDEKRVLHGWGHDRSYFVGSFNPDG
HSRNSLTSAFYIISDMIKNTPEMKPHLLHAFHNLD SKYGLKTFDPAMQDFHGFGRINLPPGTAENAATYVHATLFGVLALYMLGEGDFANEQVLKVLPIPKKEMSTSPFIMPNSYVHNEELNM
DGESMSDWYTGSANTLLKTLIRGLFGLEVKFDHLRLRPSKAFFSKEATLMV SIGNKLTRIVYKNNNNGNRTFKLNGKVIEAKLDTLSGLLYIDINKSILEHQNVIHQD – 98.4kDa



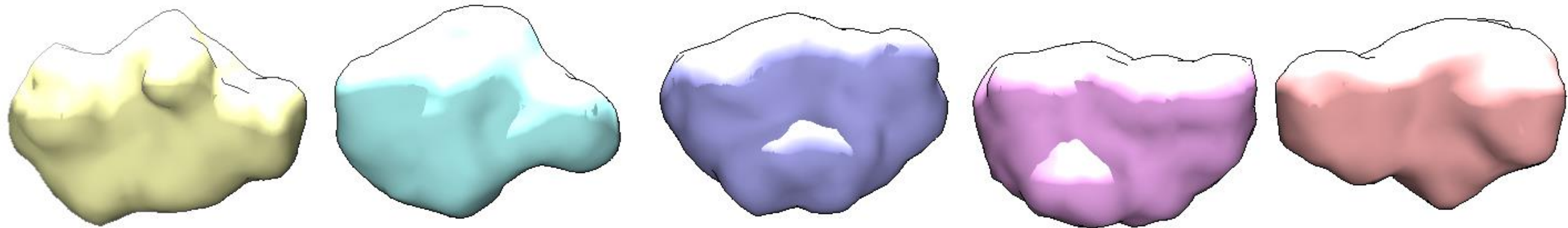
Chain A

Disordered

Ordered



Predicted to be fairly ordered aside from the first 20aa

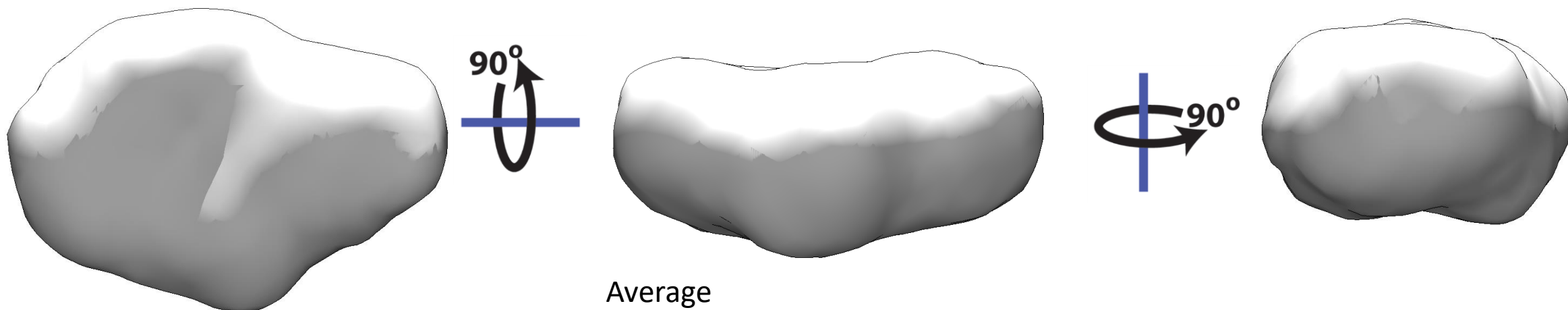


Best

Worst



NSD = 1.28



Average

Quality Parameter		Value	Expected
Multiple Concentrations in HT	Yes	3	3
SEC-SAXS	Yes		
Rg Real and Reciprical Agree	Yes	41 vs 40.7	
Dmax easy to define	No	136	
Low Flexibility	Yes	4.0	
Mass multiple of monomer	Yes	190kDa	196kDa
Linear Guinier	Yes	41	

MAHHHHHHVGTGSNDDDDKSPMKLKQDVISIYQKISLFESGQLNITKLASGAYYLDDELTLITDPVNSGARFPYAVNGMTIWAYASGYISINHSSYYILPPNLEGKEPFLDFFGIEQDGNNTYPVSLLGVSERNDEIENKRYTVFSKNIAYYITVTKNFLYAVTVYISKDFKIYFNTVAHNLTGETKQITLSSFFNMLFKYDSGESIETKWFKKVSYENNMFYDAPEDIDRHTRIENYGVVKRHLHTKPKNIQNTTSRIDYVGKRYRSVRNALSIIRSLKFEKAPLVNFTDTAINADLINEVKAYDTIISYRIETCHDKDTLNKMMASDLTDKEIKKVYEGLSNTQSYDFDNFGISFKGVNDNRVDDKVLNQFLKLVNYQIHFSSLSSNSGTVFLGVRDVMQQLES
SLIWDRKNVRSKILEVLSFIDPSGLPPRQYALPPKEGNPRMDLRPFIDQGLWIISTLHTYLAYTEDYDILNEVCGYERIEPNASAKKSKVENSVEHLIRVTNYLVSNI DPSTYGLKALYGDWNDALDGLGLIEGSSG
YNGVSVMATLQLYENLERMIEILKLVDPQNEHINTYEVVRHNLSLGINKYAVVIKQDEKRVLHGWGHDRSYFVGSFNDPDGHSRNSLTSAFYIISDMIKNTPEMKPHLLHAFHNLD SKYGLKTFDPAMQD
FHGFGRINLPPGTAENAATYVHATLFGVLALYMLGEGDFANEQVLKVPITKKEMSTSPFIMPNSYVHNEELNMDGESMSDWYTGSA NTLLKTLIRGLFGLEVKFDHLRLRPSKAFFSKEATLMV SIGNKLTRI
VYKNNNNGNRTFKLNGKVIEAKLDTLSGLLYIDINKSILEHQNVIIHQD – 98.4kDa