



H0968– Analysis 4/20/18

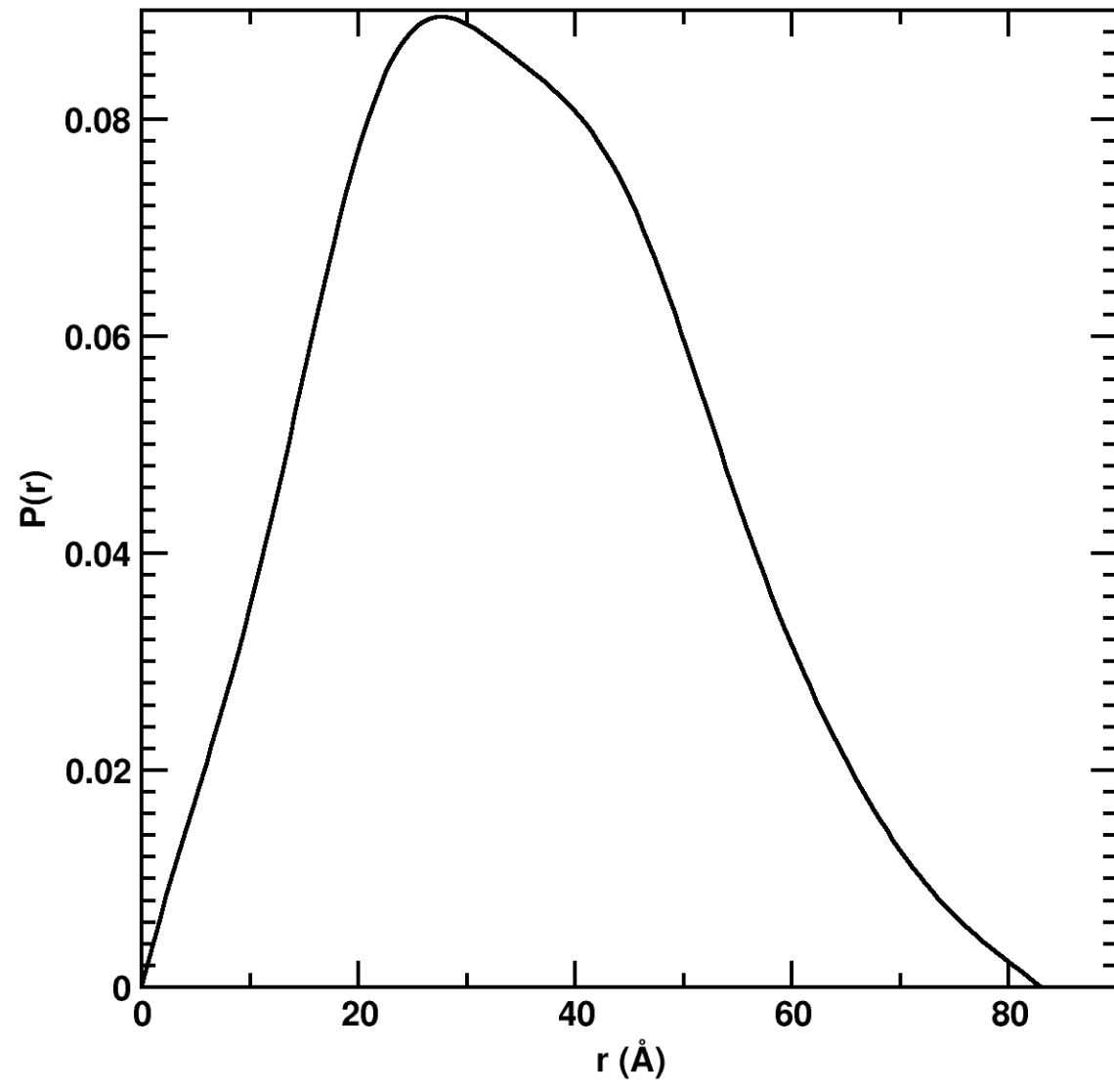
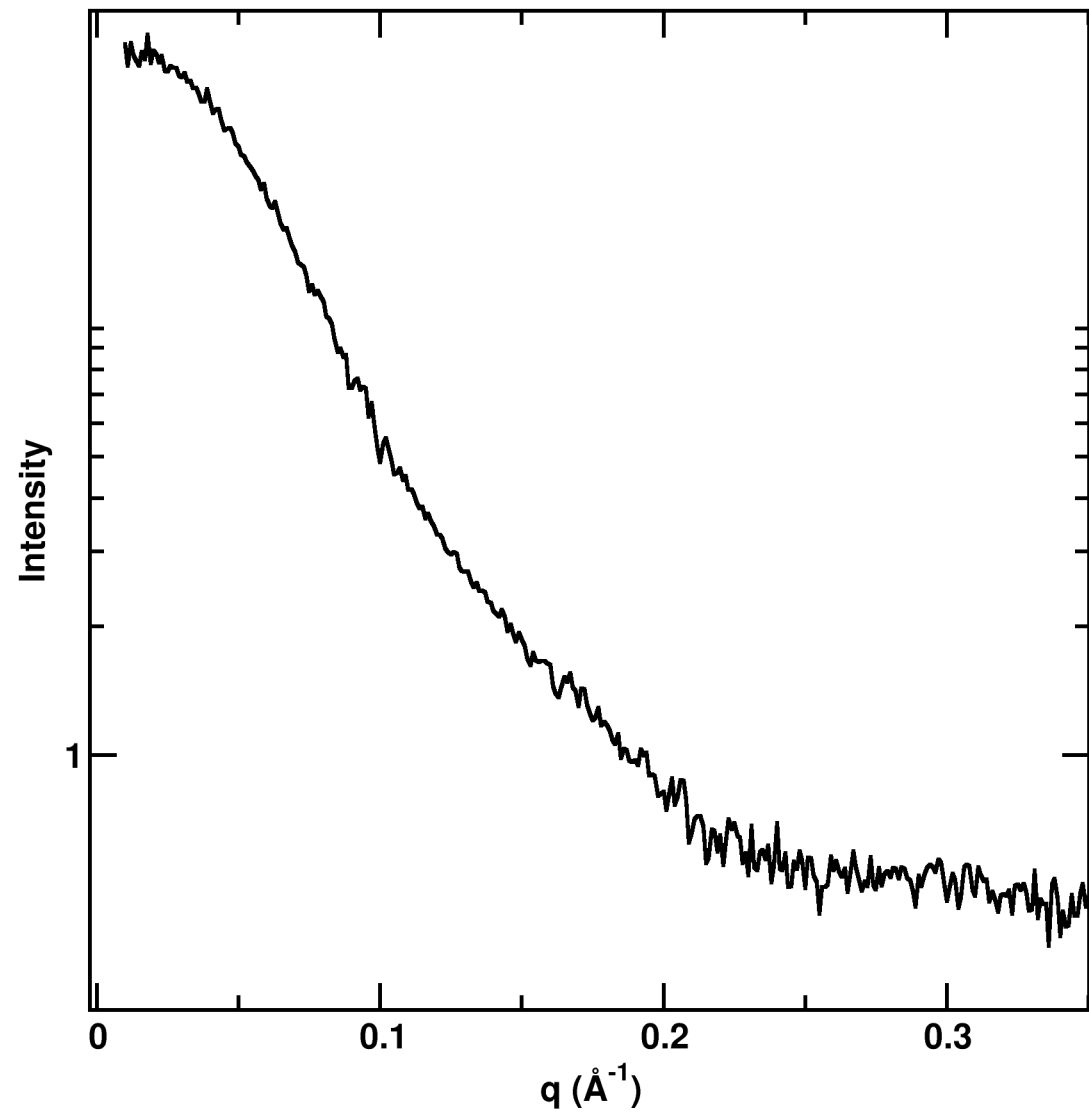
Low Availability
And Heterogeneous on SEC

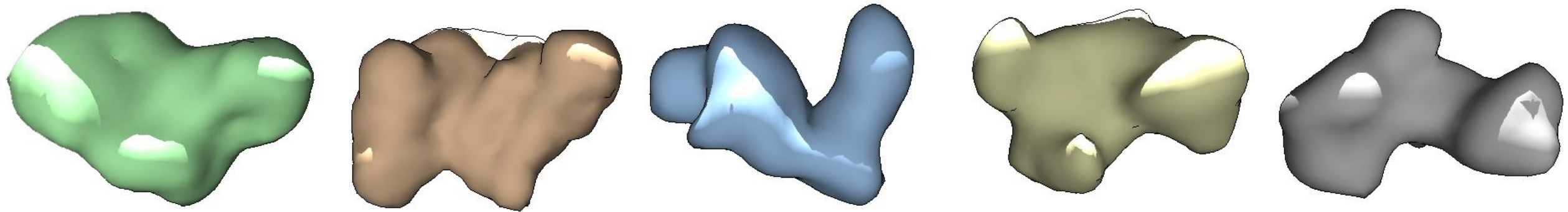
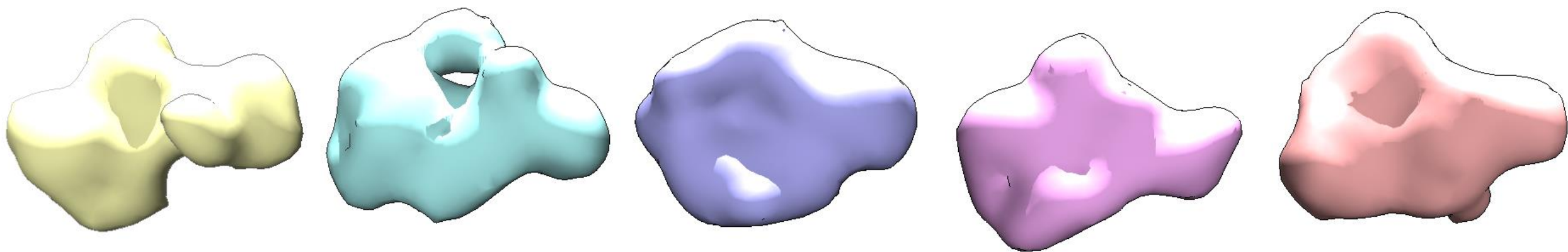


Possibly a 2:1 complex
Significant Flexibility

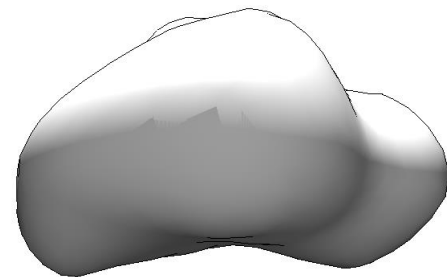
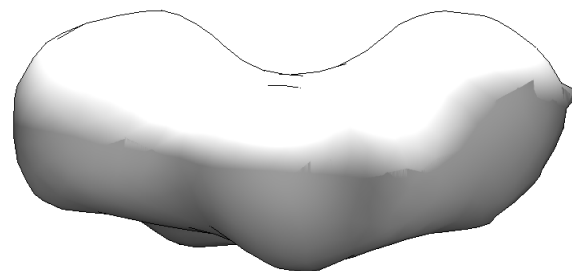
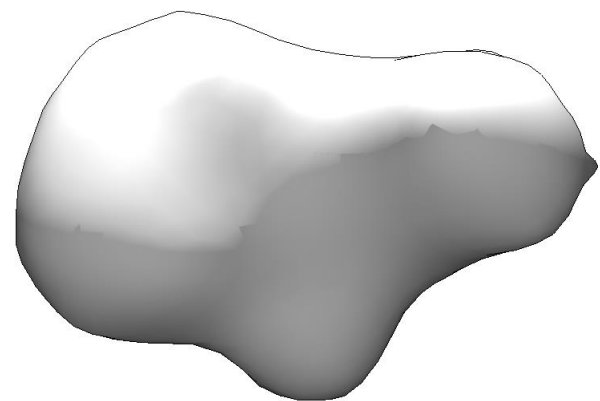
Sample: CASP Chicago215Sample			
Variable	Value	Error +/-	Units
Rg	25.8	1	Angstroms
Porod Exponent	3.1		Scale (2-4)
Mass SAXS	36	5	kDa
Max Dimension	83	3	Angstroms
Radius of Cross Section	19.2	1	Angstroms
Volume	108771	5,000	Cubic Angstroms
Real Space Rg	26.8	3	Angstroms

ChainA:
VPEITTAQTIANSVVDAKKFDYLFGKATGNSHTLDRTNQLALEMKRLGVADDINGHAVLAEHFTQATKDSNNIVKKYTDQYGSFEIRESFFIG
PSGKATVFESTFEVMKDGSHRFITTIPKNGVTK – 13.9kDa
ChainB:
MFIENKPGIEILLSFFESEPVSFERDNISFLYTAKNKCGLSVDFSFVVEGWIQYTVRLHENEILHNSIDGVSSFSIRNDNLGDYIYAEIITKELINKI
EIRIRPDIIKSSSVIR - 13.4kDa
Total 27.3kDa



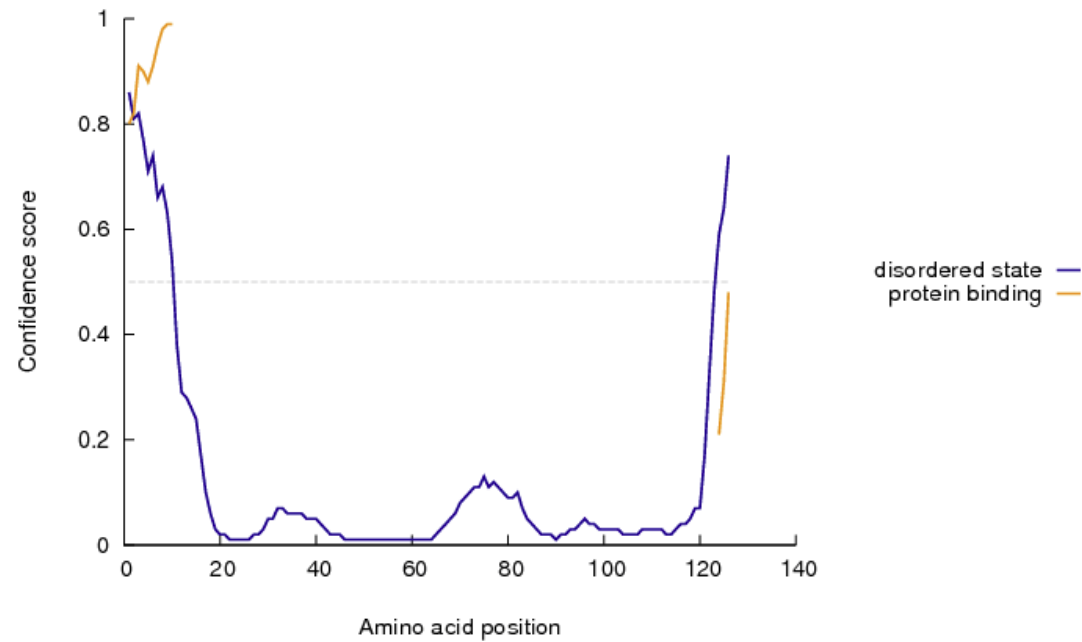


NSD = 1.31



Chain A

Intrinsic disorder profile



Chain B is predicted to be mainly folded

Disorder in first 33 and last 5aa

Quality Parameter	Compliance	Value	Expected
Multiple Concentrations in HT	No	1	3
SEC-SAXS	Yes	Several Peaks	
Rg Real and Reciprical Agree	OK	25.8 vs 26.58	
Dmax easy to define	Yes	80 – 85	
Low Flexibility	No	3.1	
Mass multiple of monomer	No	36kDa	27kDa
Linear Guinier	Yes	25.8	

ChainA:

VPEITTAQTIANSVVDAKKFDYLF GKATGNSHTLDR TNQLALEMKRLGVADDINGHAVLAEHFTQATKDSNNIVKKYTDQYGSFEIRESFFIG
PSGKATVFESTFEVMKDGSHRFITTIPKNGVTK – 13.9kDa

ChainB:

MFIENTKPGEIELLSFFESEPV SFERDNISFLYTAKNKCGLSVDFSFVVEGWIQYTVRLHENEILHNSIDGVSSFSIRNDNLGDYIYAEIITKELINKI
EIRIRPDIIKSSSVIR - 13.4kDa

Total 27.3kDa