

Critical
Assessment
of Techniques
for Protein
Structure
Prediction
CASP13
Targets

Lisa Kinch, Andriy
Kryshtafovych,
Assessor Teams
and the
Prediction Center



CASP13 Targets: Overview of the Task

1 Domain-Based Definition of Evaluation Units

- Split targets manually (domain parsers and templates)
- Evaluate server performance on splits with Grishin plots
- Remove some extended regions and domains (tags, etc.)
- Difficult examples

2 Evolutionary-Based Assignment into Categories

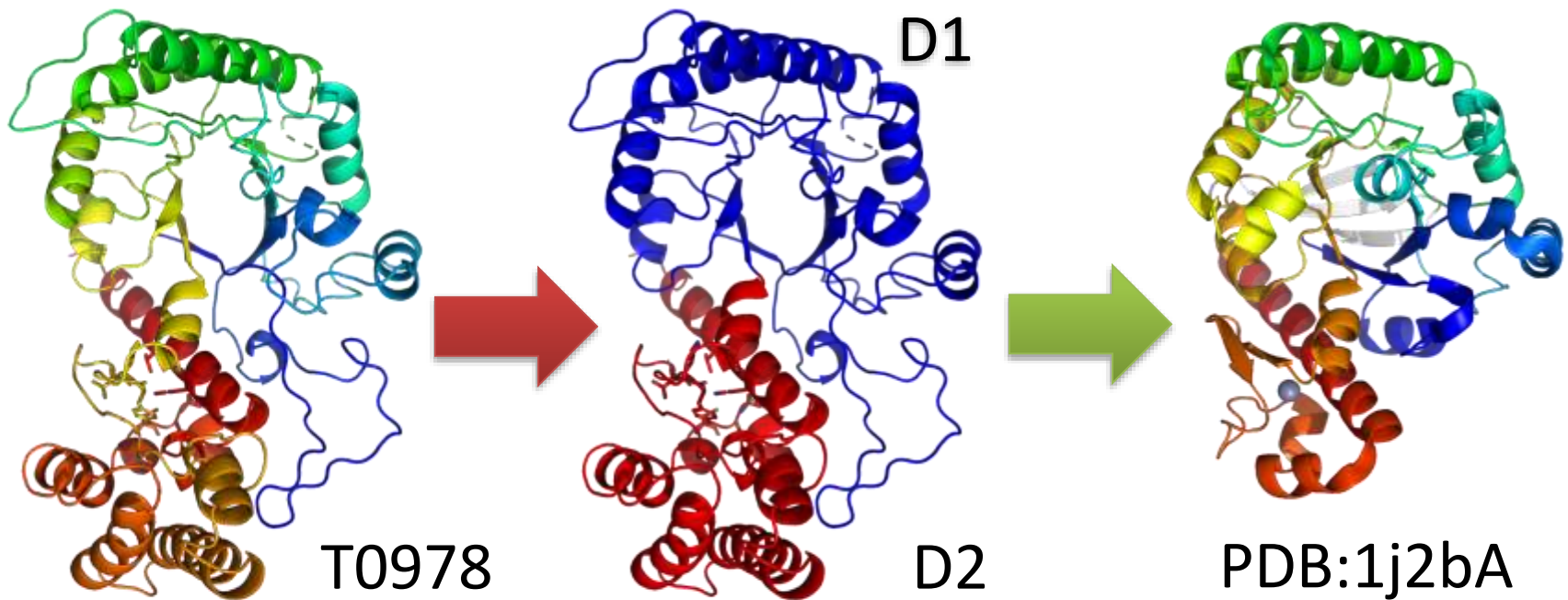
- ECOD classification using sequence/structure templates
- Assign “High Accuracy Modeling” (formerly Template Based Modeling) or “Topology” (formerly Free Modeling)
 - CASP12-like difficulty/performance plot
 - Boundary cases examined with PCA and score clustering

CASP13 Targets: Example EVU Definition

1

Split targets into domains

Check templates for consistency

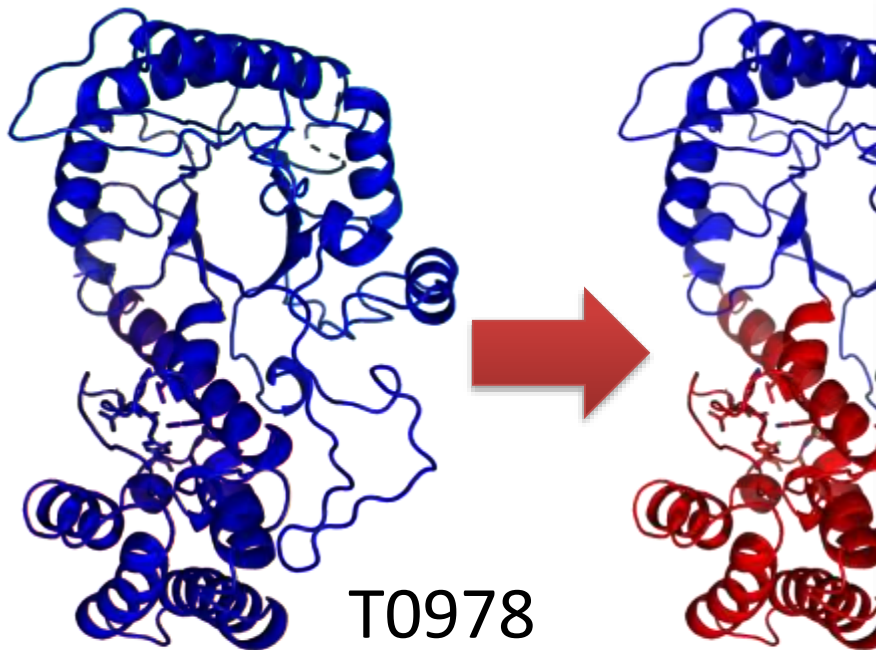


CASP13 Targets: Example EVU Definition

1

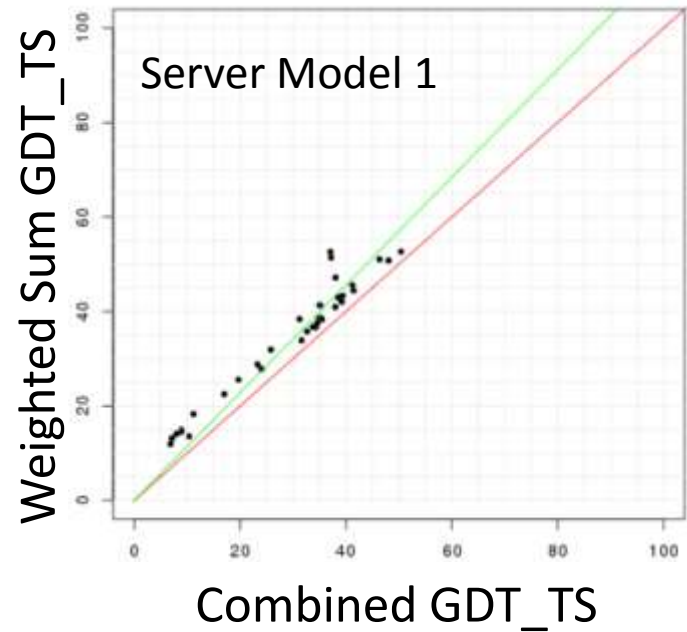
Split targets into domains

Compare performance (Grishin Plot)



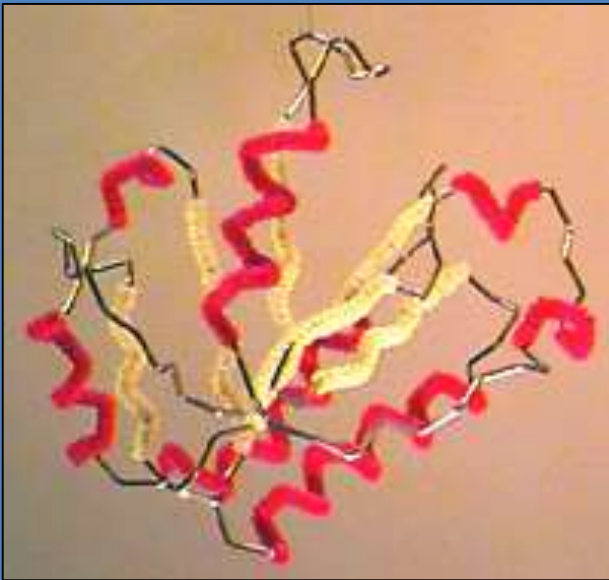
T0978

Treat as single EVU



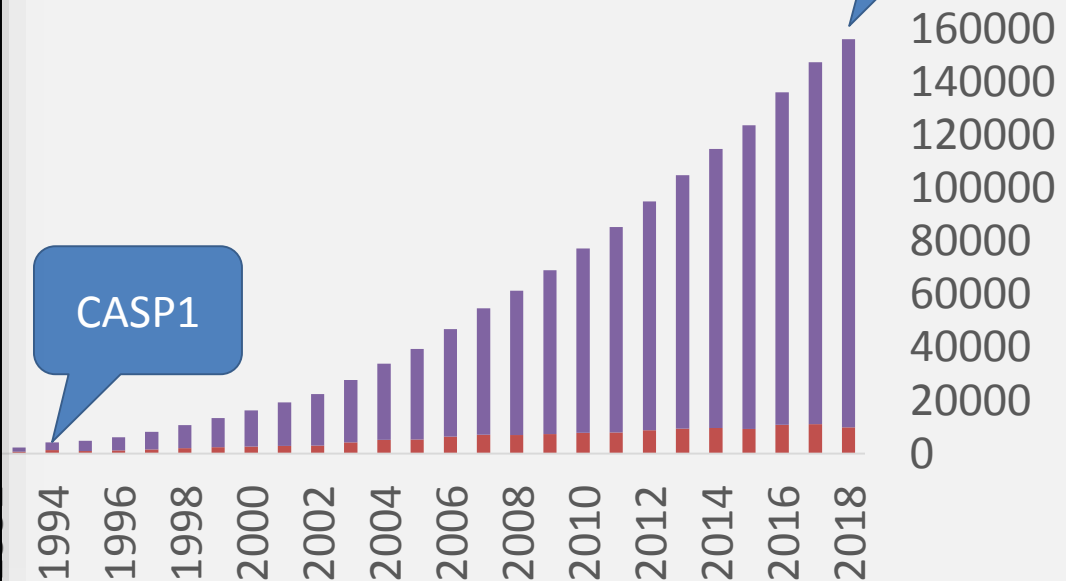
CASP Targets and the Transformation of Structure Biology

1



CASP1 Targets: 33
(24 with predictions)
2871 Structures in PDB

Growth of Released Structures in PDB



■ Structures Per Year ■ Total Entries

CASP Targets and the Transformation of Structure Biology

1

Increasing number, size *and* complexity of PDB

- Expanding available templates: 14,622 PDB structures in 2018
- Transforming methods: 2541 EM structures in 2018
- More examples of protein dynamics, domain interactions, molecular complexes and membrane proteins

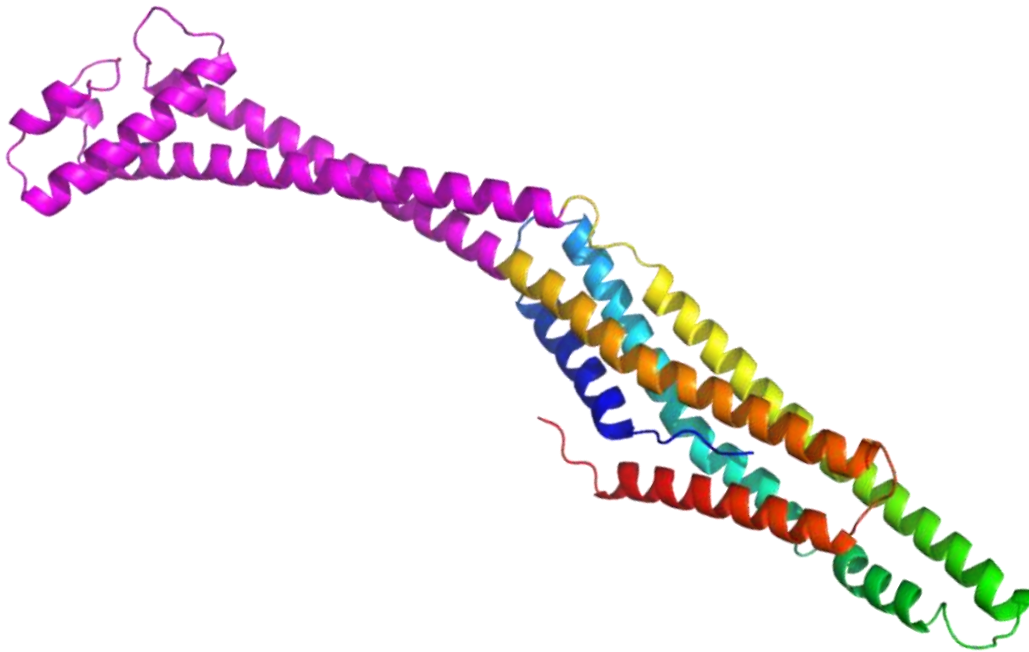
CASP13 Target Type	Number
Tertiary Structure Prediction	90
(all-group)	82
Hetero-Multimer	13
Refinement	31
Assisted Prediction	60
Transmembrane	5*
EM Targets	7

* T0950 exists in soluble AND transmembrane states

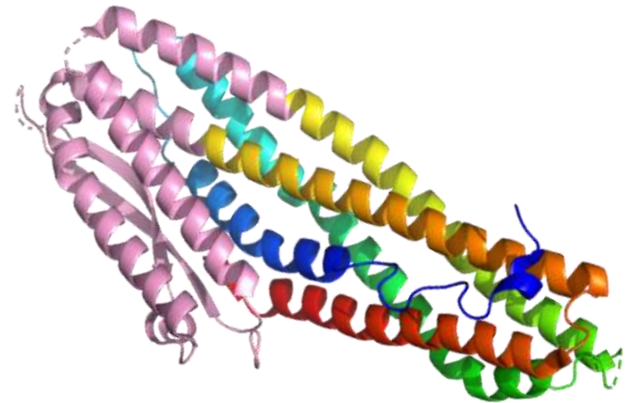
Example: T0950 Multiple Conformations

1

T0950: membrane
embedded conformation



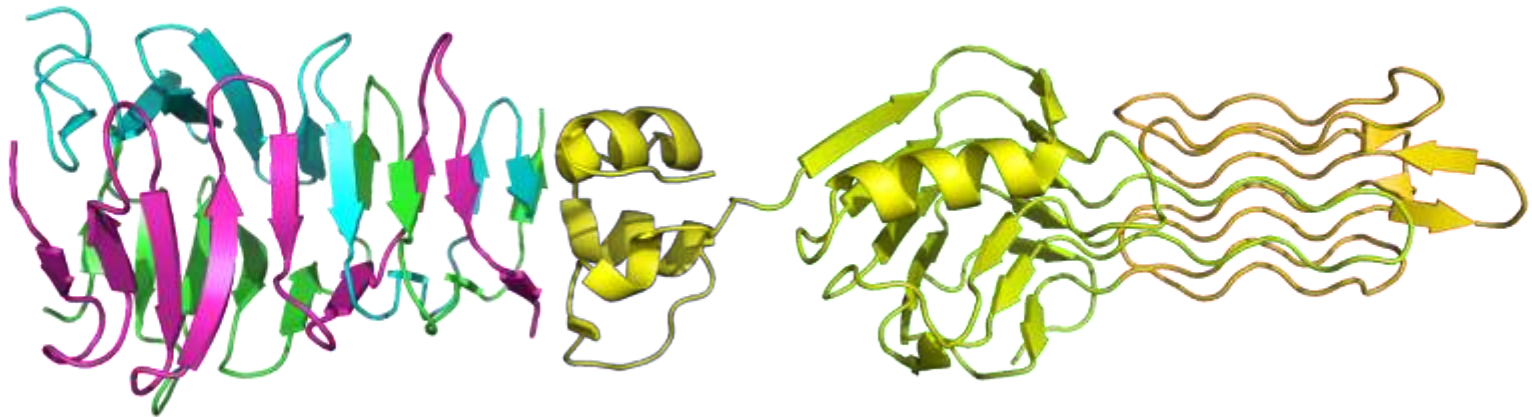
Top Template (4k1p):
soluble conformation



Attempted split based on **conformation change**,
but kept as single EVU

Example: T0953 Complex Interaction Topology 1

- S1 adopts an obligate trimer interaction (cyan, pink, green)
- S2 adopts an intertwined, non-sequential, multidomain topology with a low sequence complexity domain (blue, green, and red)

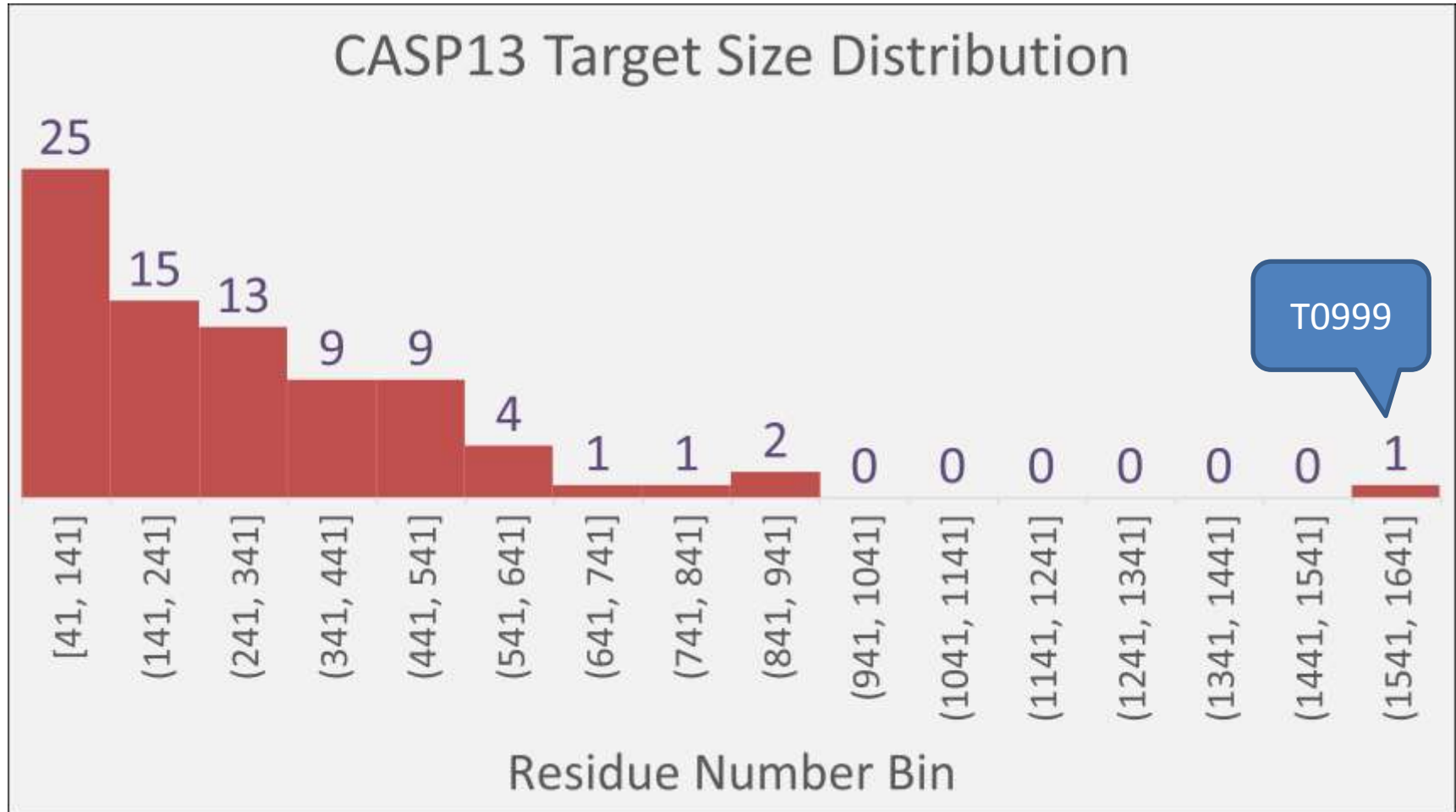


S1

S2

CASP13 Targets: Large Structures

1

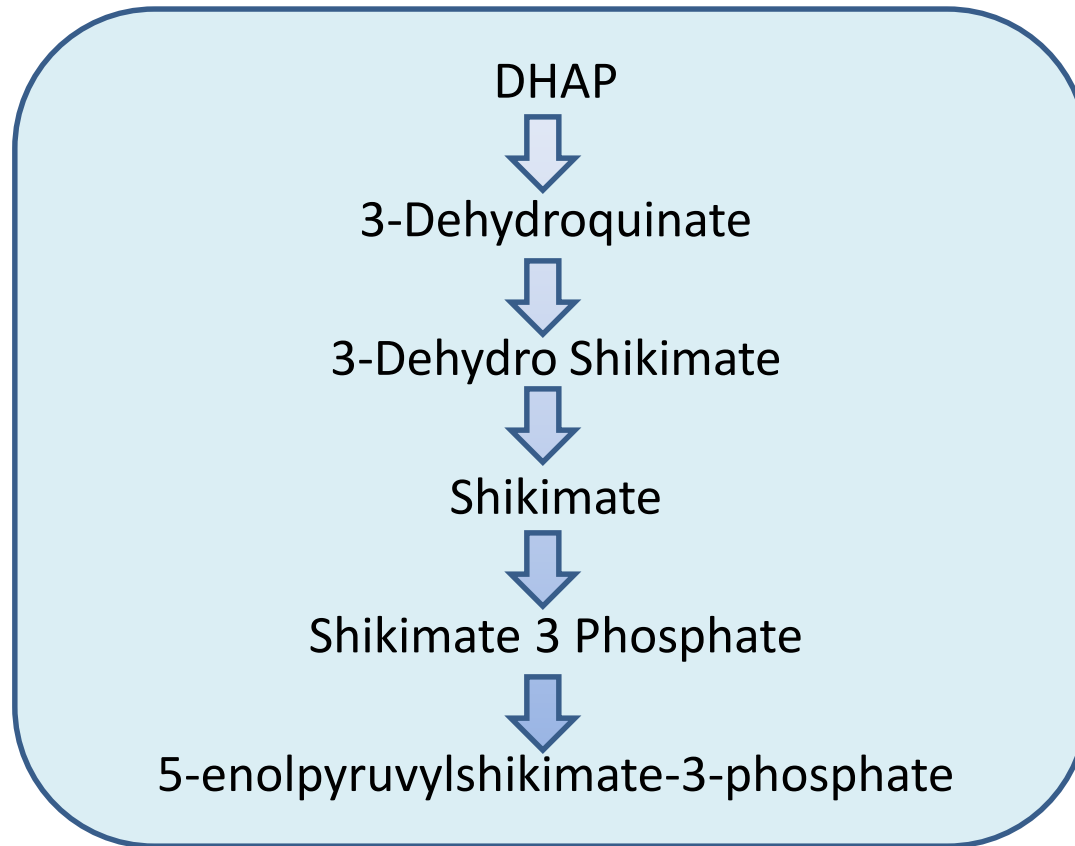


14 Targets > 500 residues

CASP13 Targets: Large Structures

1

T0999: AroM polypeptide, contains 5 central enzymes of the shikimate pathway fused in one chain =1589 residues

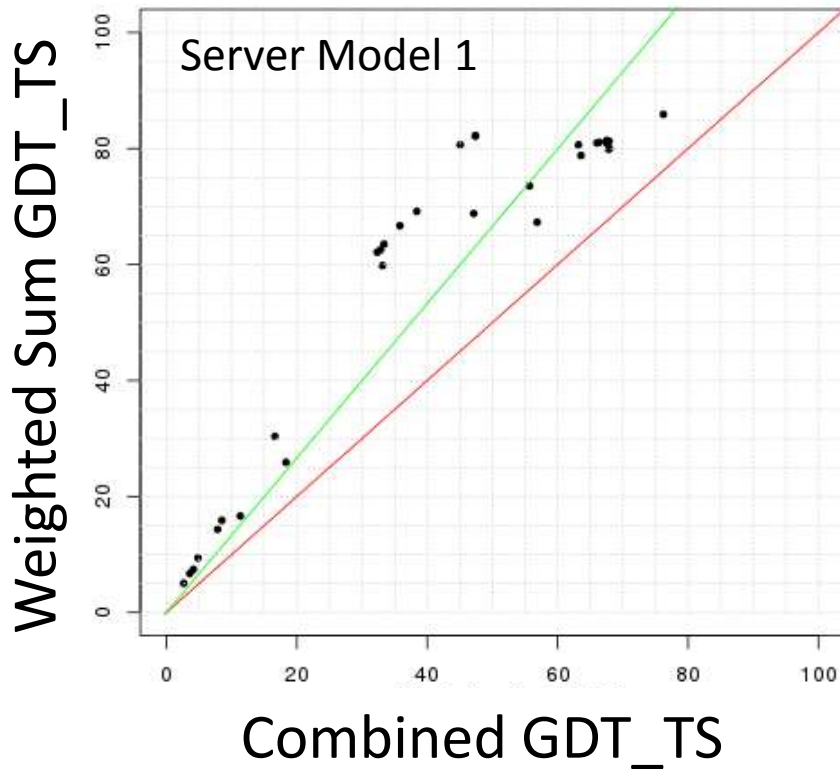


				T0999
0	0	0	<u>1</u>	
(1241, 1341]	(1341, 1441]	(1441, 1541]	(1541, 1641]	

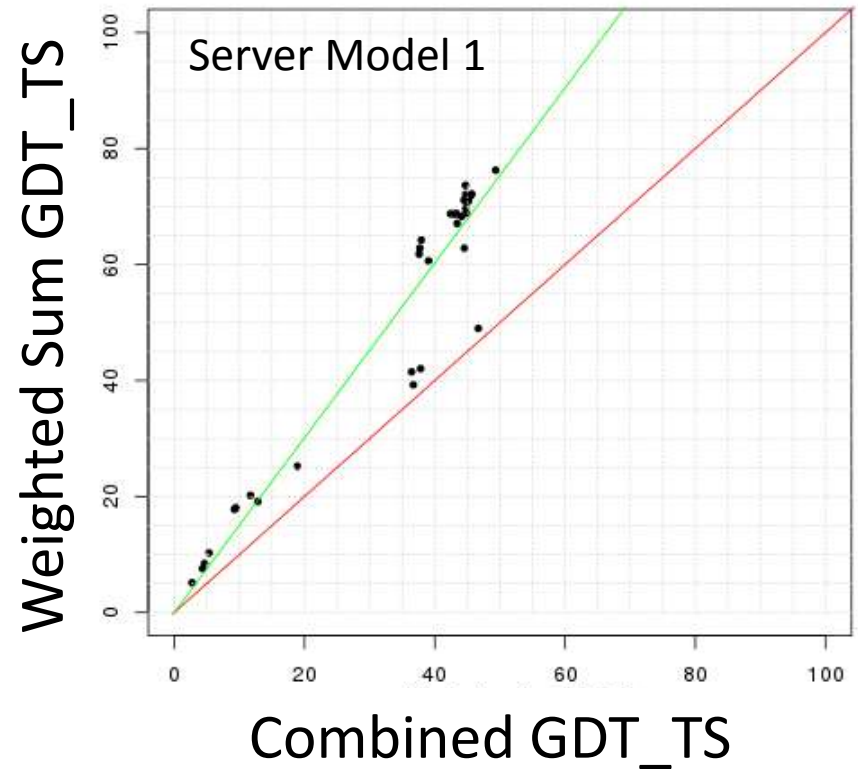
T0999: Difficulty in Domain Splitting

1

Grishin Plot: Doman4&5



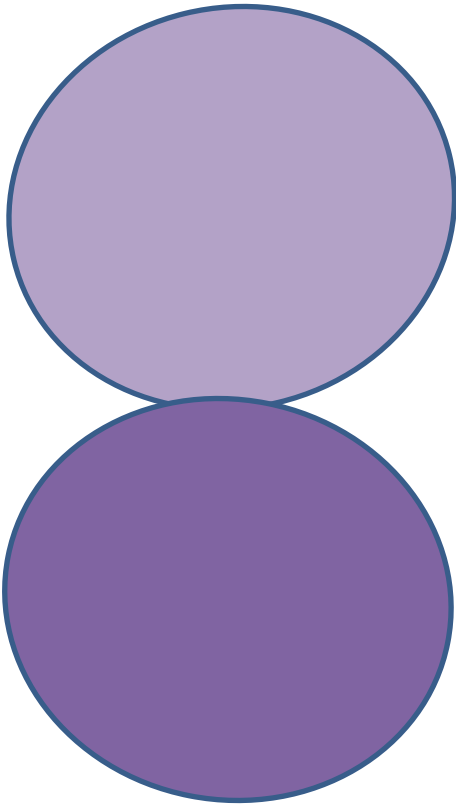
Grishin Plot: Domain3&5



T0999: EPSP synthase Conformation Change

1

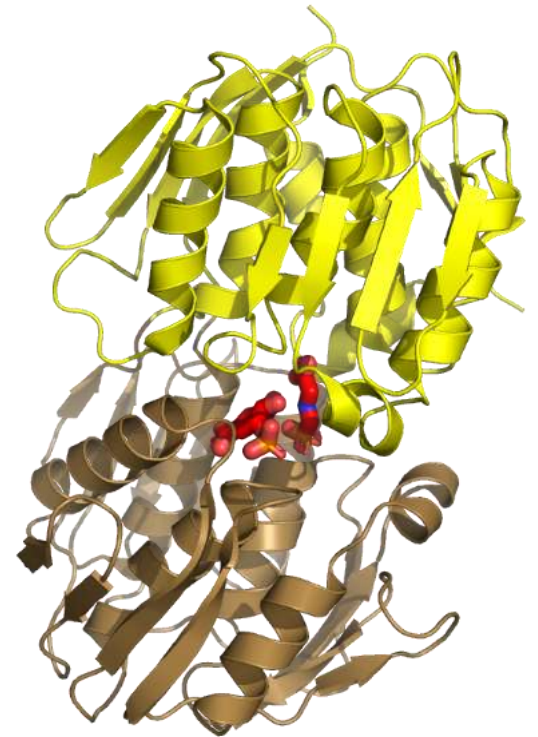
T0999
Domain 2



Open
template



Closed
template



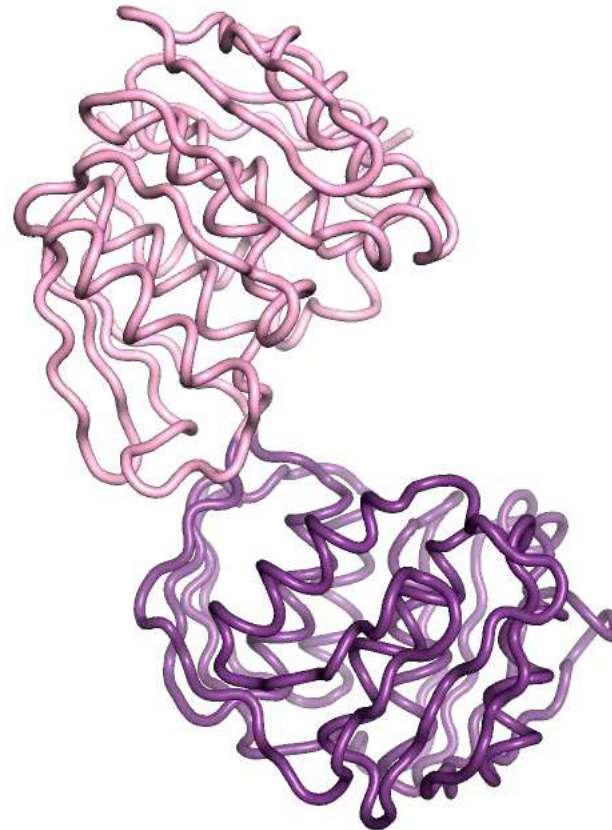
T0999: EPSP synthase Conformation Change

1

T0999
Domain 2

Open
template

Closed
template



Splits (Duplications)

T0957s1

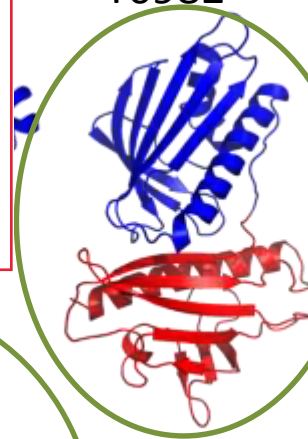


T0976

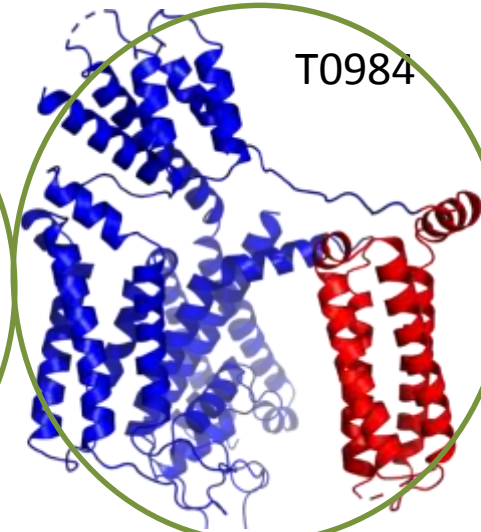


CASP:
Image redacted

T0982

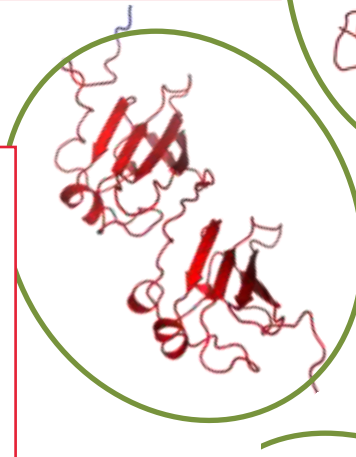


T0984

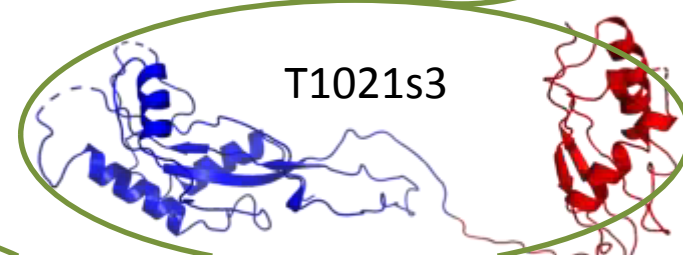


CASP:
Image redacted

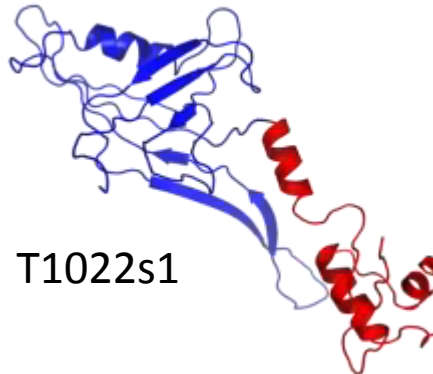
CASP:
Image redacted



T1021s3



T1022s1



CASP:
Images redacted

CASP13 Targets: Domains in Numbers

1

Split Targets into Multiple EVUs

- Split 19 Targets
- 52 EVUs (many duplications)

Multidomain Targets not Split

- 13 Targets (3 EVUs)
- 37 Unsplit Domains (6 unsplit EVUs)

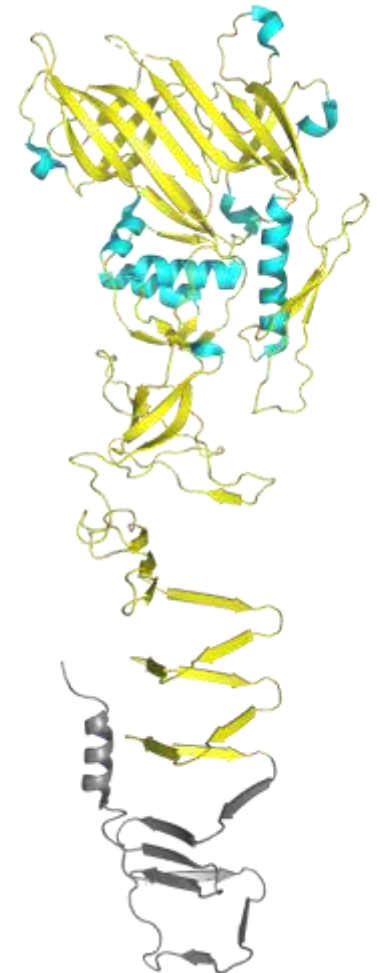
Single Domain Targets

- 46 Targets
- Include extended segments, many with elaborations

T1022s2
multidomain



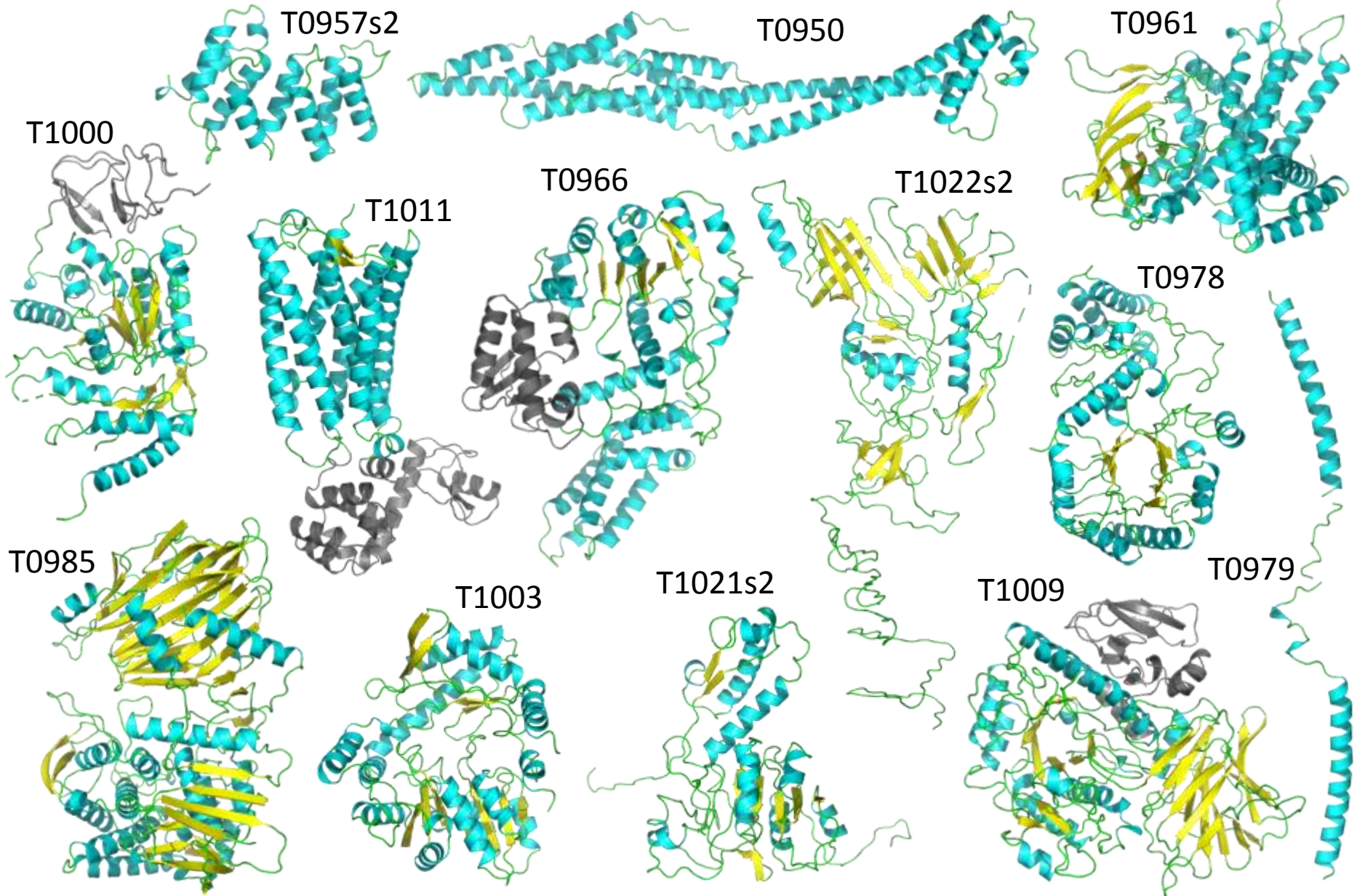
4mtk
template



Target not split

CASP13 Targets: Multidomain Not Split

1



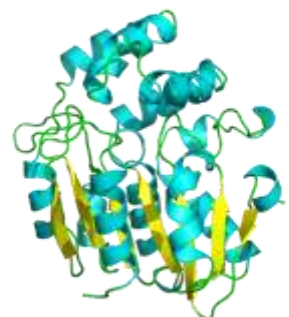
CASP13 Targets: Single Domain EVUs

1

T0949



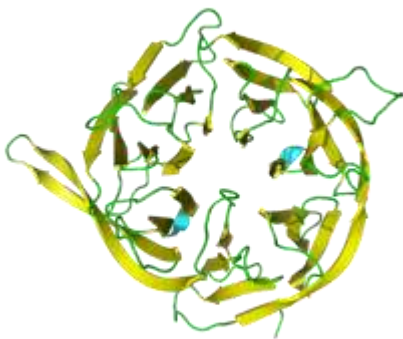
T0951



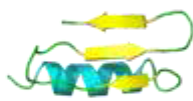
T0953s1



T0954



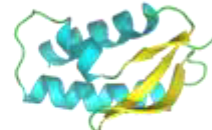
T0955



T0959

CASP:
Image redacted

T0958



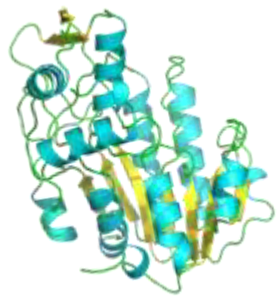
T0962

CASP:
Image redacted

T0964



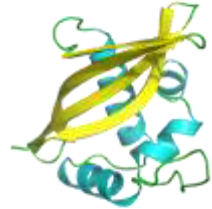
T0965



T0967



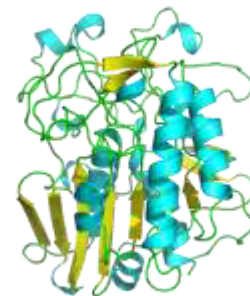
T0968s1



T0968s2



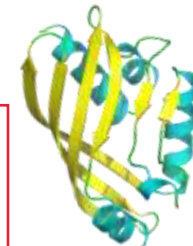
T0969



T0970

CASP:
Image redacted

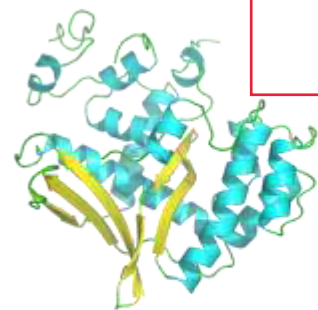
T0971



T0973

CASP:
Image redacted

T0975



T0974s1

CASP:
Image redacted

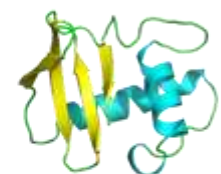
T0980s1



T0983



T0986s1



T0986s2



CASP13 Targets: Single Domain EVUs

1

90

T0991

CASP:
Image redacted

T0992



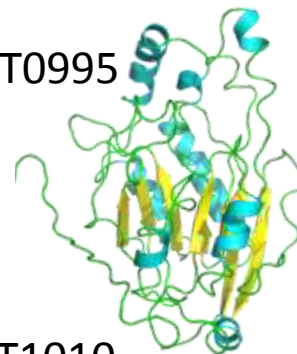
T0993s1



T0993s2

CASP:
Images redacted

T0995



T0997

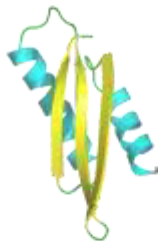


CASP:
Image redacted

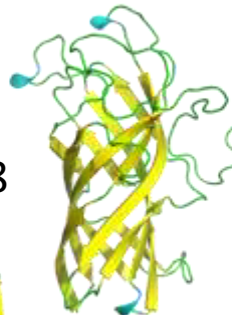
T1005



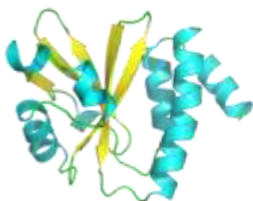
T1006



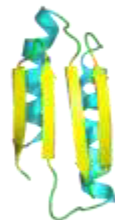
T1010



T1001



T1008



T1013

CASP:
Image redacted

T1015s1

T1015s2

CASP:
Images redacted

T1017s2

CASP:
Image redacted

T1017s1

CASP:
Image redacted

T1016



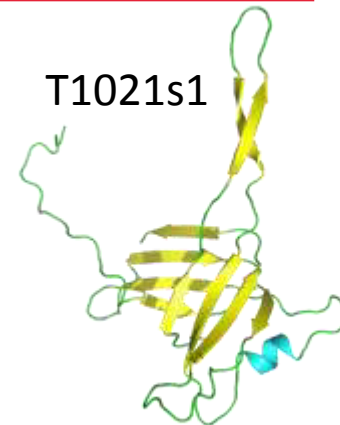
T1018



T1020

CASP:
Image redacted

T1021s1



T1019s1

CASP:
Image redacted

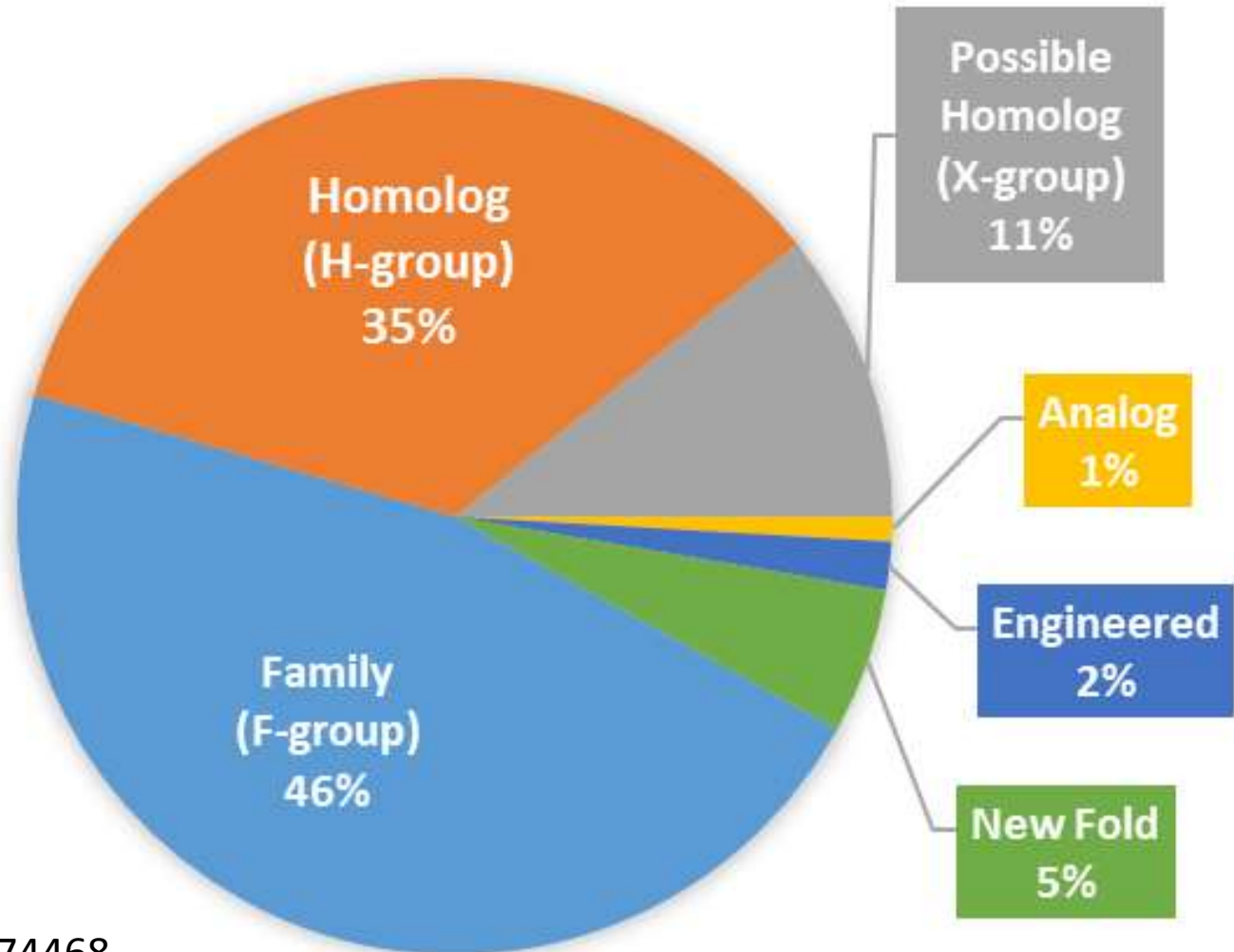
T1019s2

CASP:
Image redacted

CASP13 Targets: Position in Evolution

2

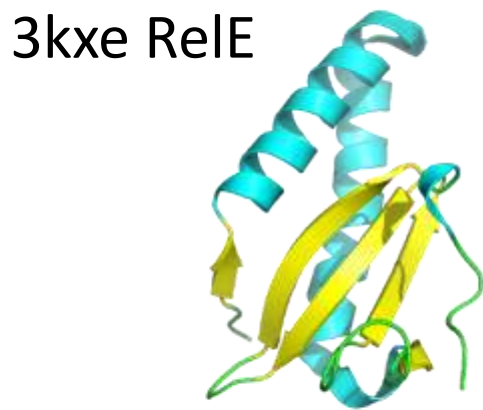
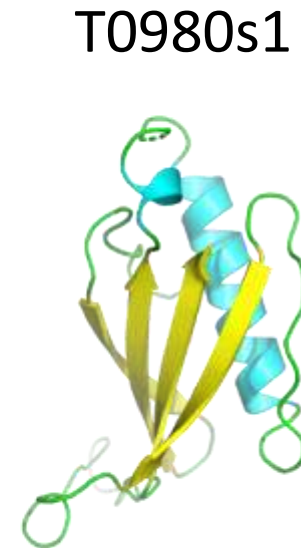
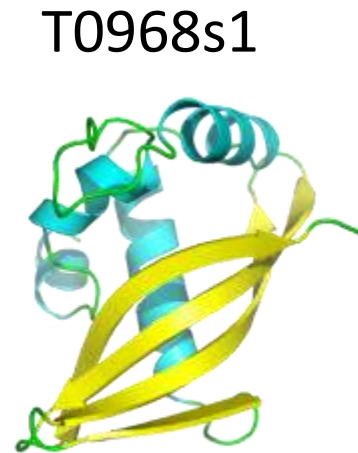
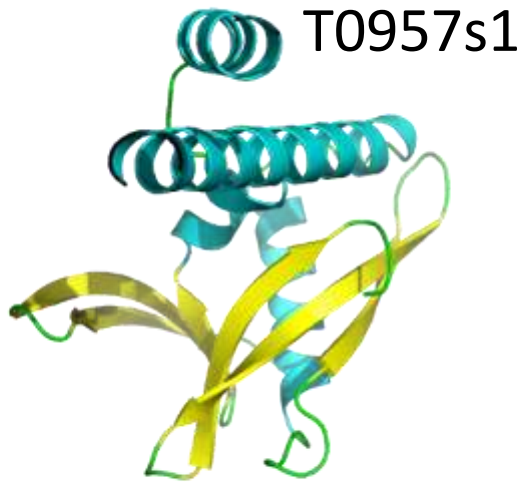
ECOD Classification Level



ECOD: PMID: 25474468

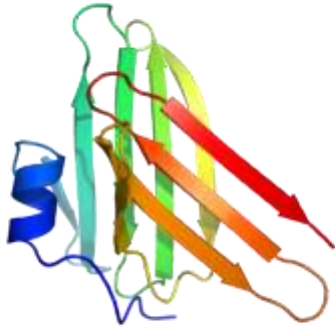
CASP13 Targets: Homology Level Classification **2**

Fast evolving RelE Nuclease Toxins

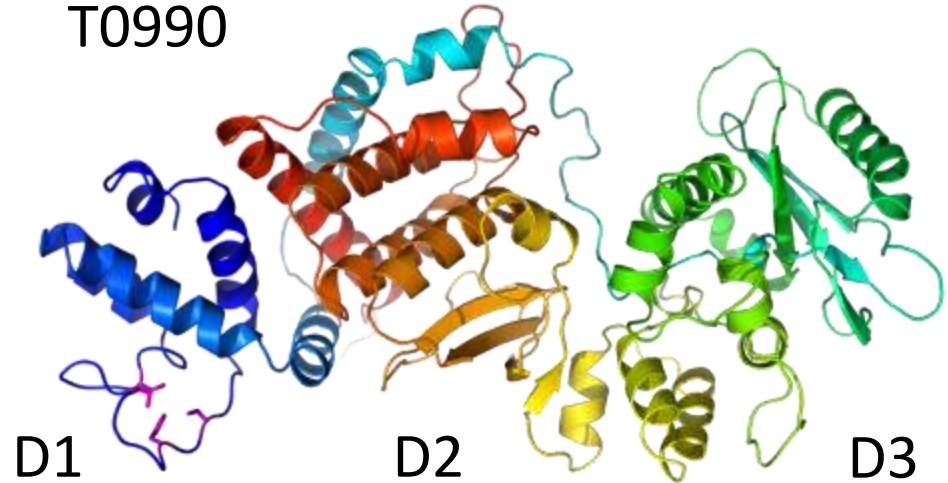


CASP13 Targets: 6 Potential New Folds

T0968s2



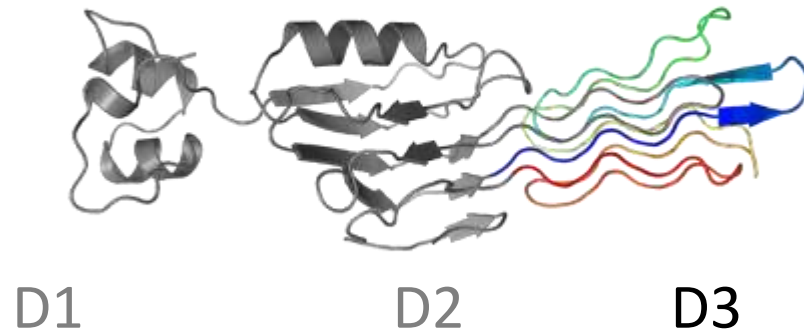
T0990



T1017s2

CASP:
Image redacted

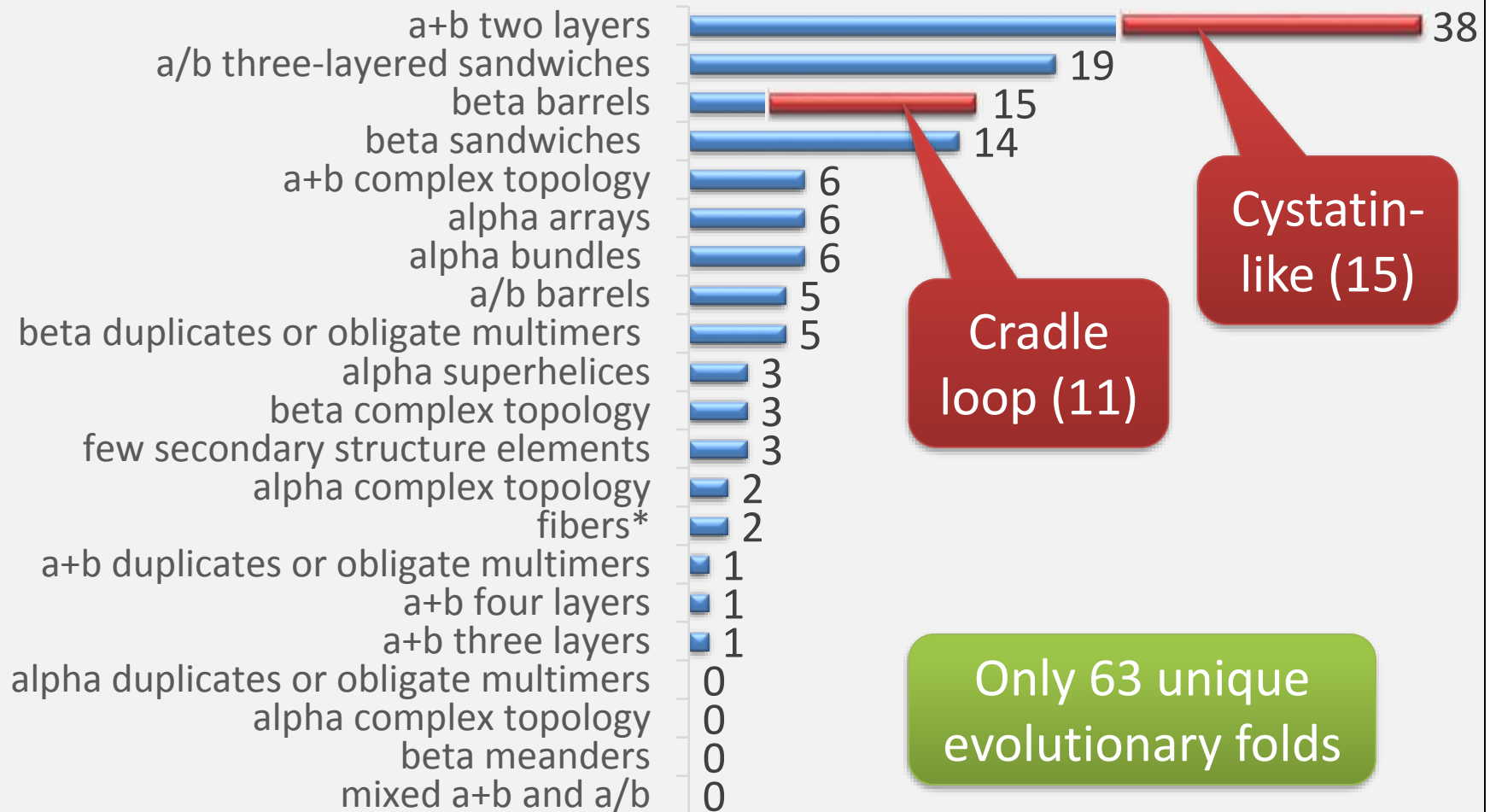
T0953



CASP13 Targets: Position in Evolution

2

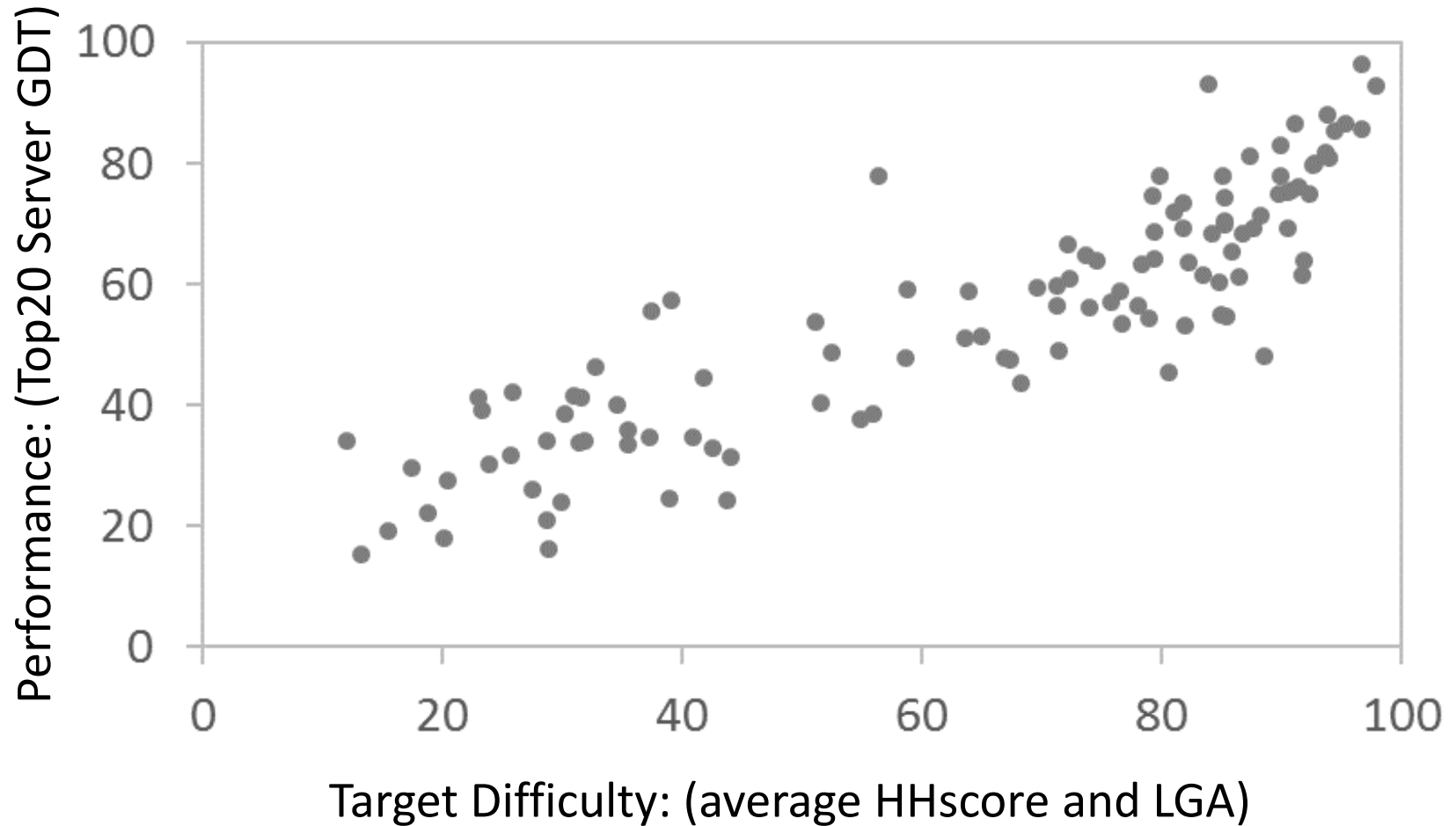
ECOD Architectures (130 Domains)



CASP13 Targets: Assign EVUs into Categories

2

CASP12-Like Plot



Where to make the boundary?

CASP13 Targets: Establish Classification Bounds 2

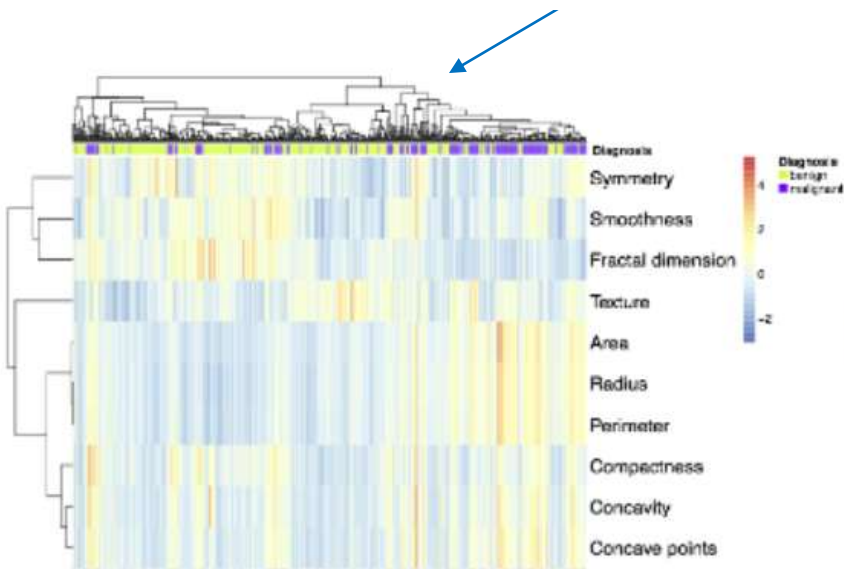
W566–W570 *Nucleic Acids Research*, 2015, Vol. 43, Web Server issue
doi: 10.1093/nar/gkv468

Published online 12 May 2015

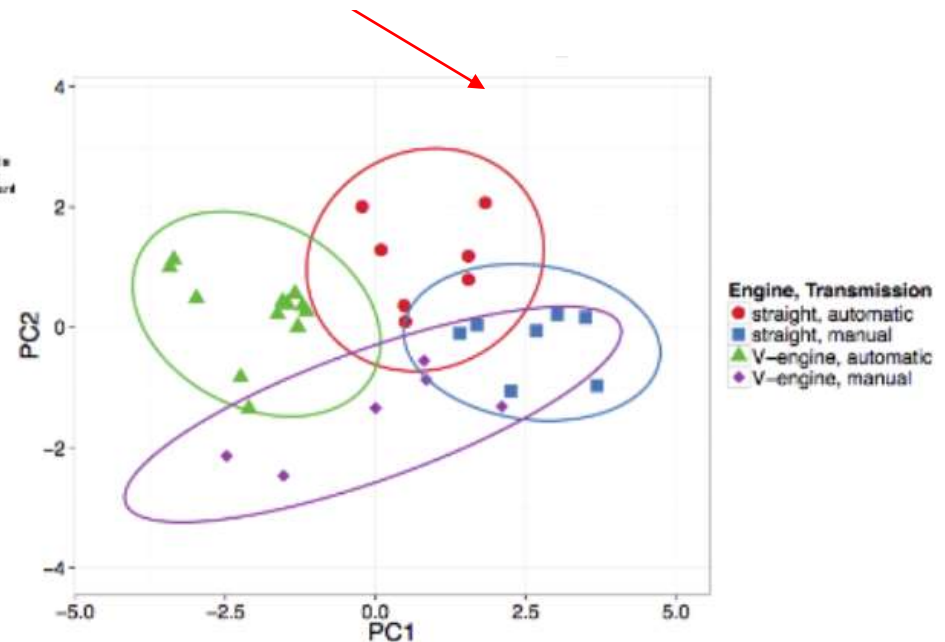
ClustVis: a web tool for visualizing clustering of multivariate data using Principal Component Analysis and heatmap

Tauno Metsalu and Jaak Vilo*

Heatmap: Data Clustering



PCA: Distribution of Measures



CASP13 Targets: ClustVis Clustering Methods

2

Choose *Measures* from Prediction Center:

HHPRED Probability

HHPRED Coverage

HHscore (Probability*Coverage)

LGA template

Performance (Top20 Server First Models: average GDT_TS)

Performance (All server models: average GDT_TS)

Performance (Top server model GDT_TS)

Neff from Max (psi, Hhblitz) Neff/len per domain



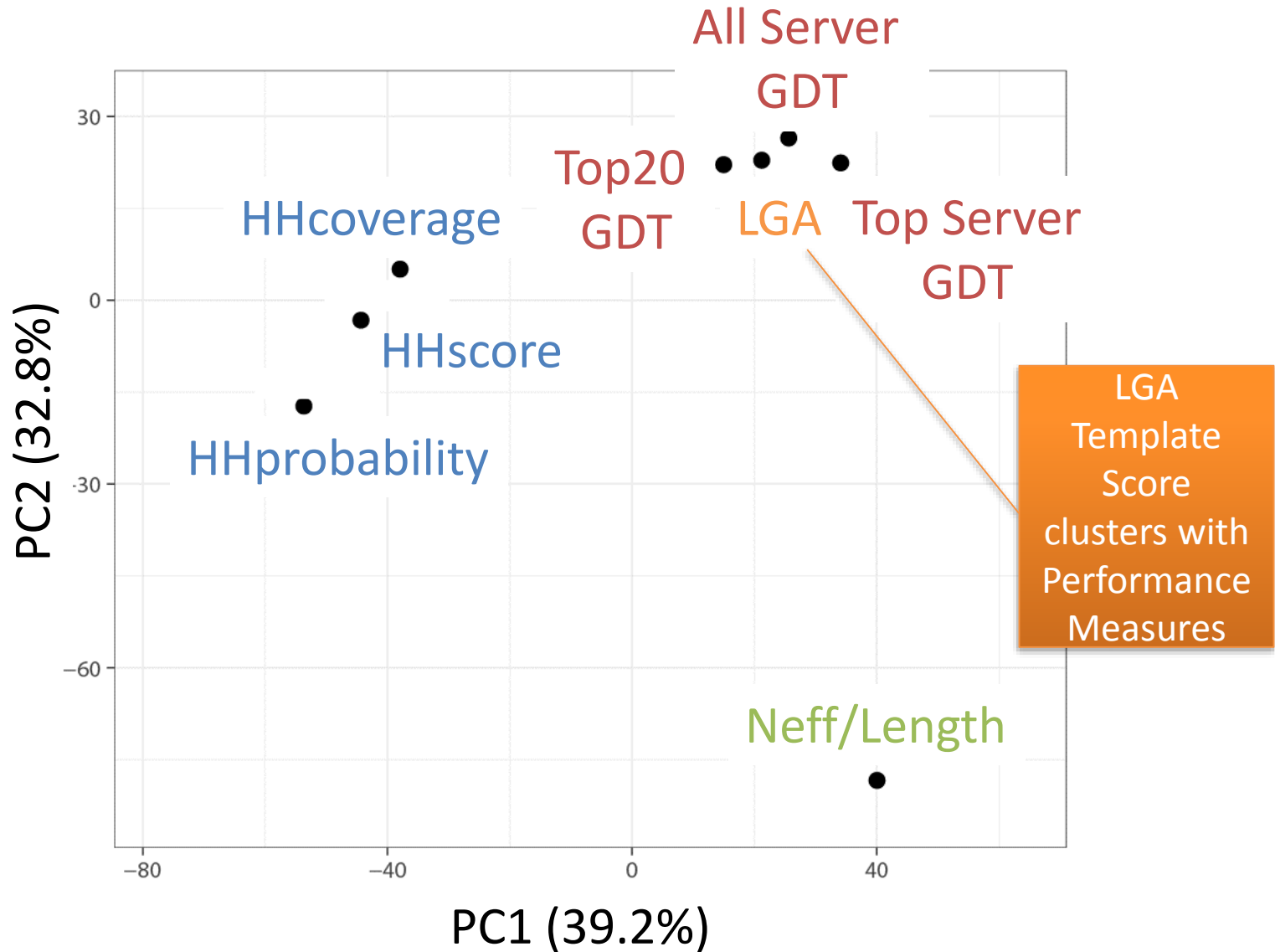
Transform into T-scores (for every Target = 111 EVUs)

$$T_{\text{Target}} = (\text{Target}_{\text{measure}} - \text{Average}_{\text{measure}}) / (\text{St.Dev.}_{\text{measure}} / \sqrt{111})$$



Same as Z-score except

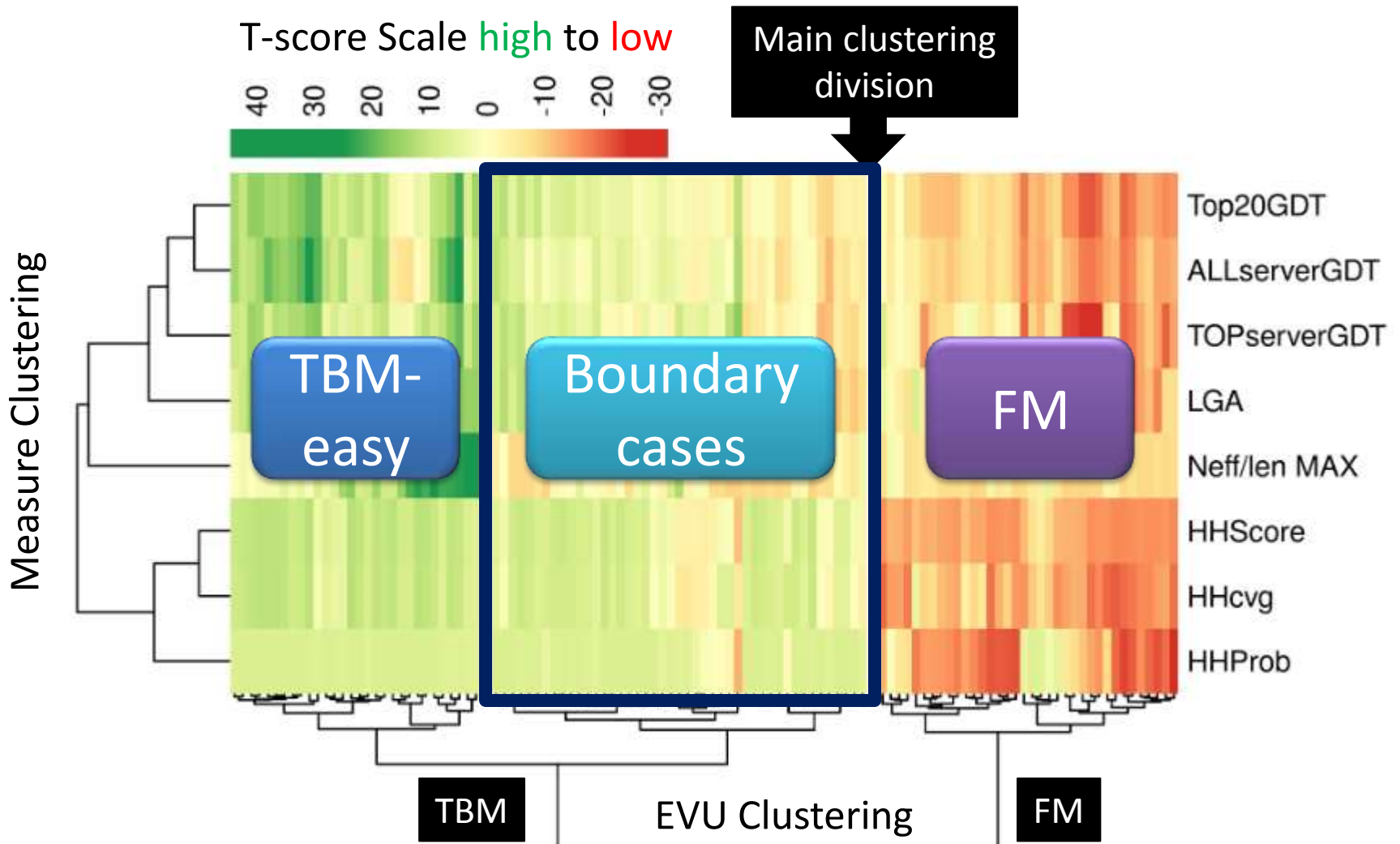
CASP13 Targets: PCA on unscaled T-scores ²



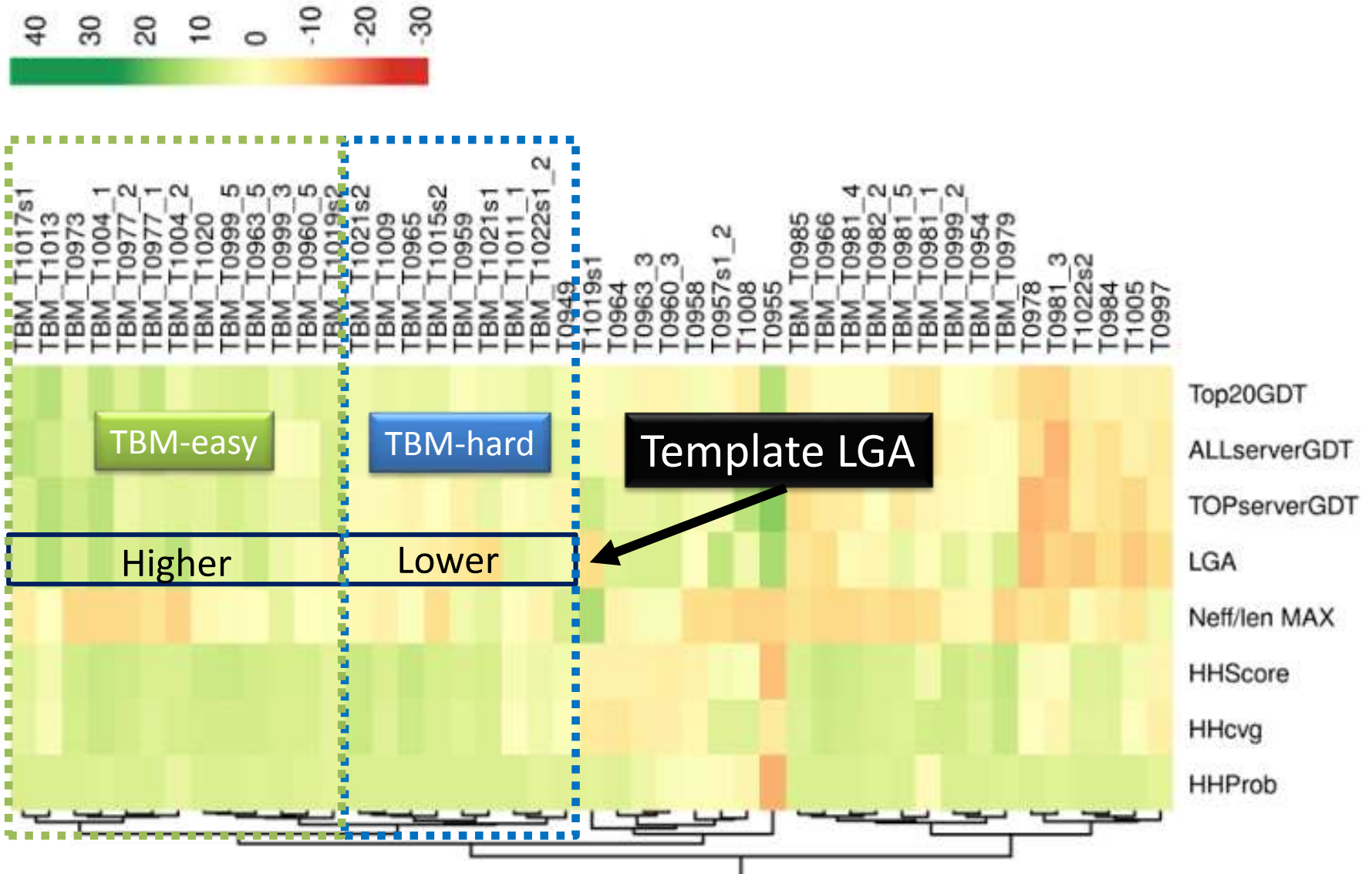
CASP13 Targets: Clustered Heatmap

2

8 Rows and 111 Columns: clustered by Euclidean Distance and Ward Linkage



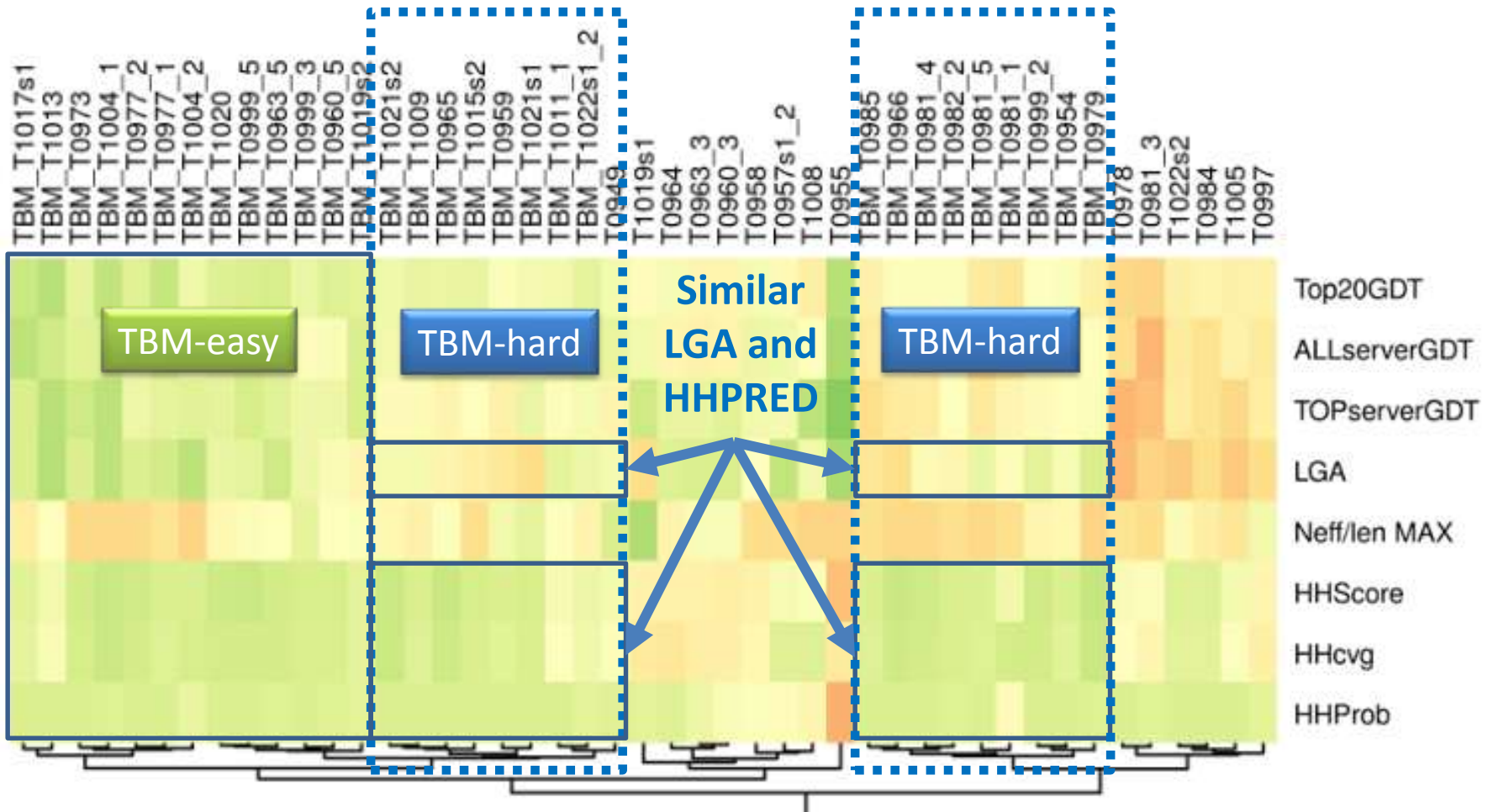
Boundary EVU Clusters Define Categories 2



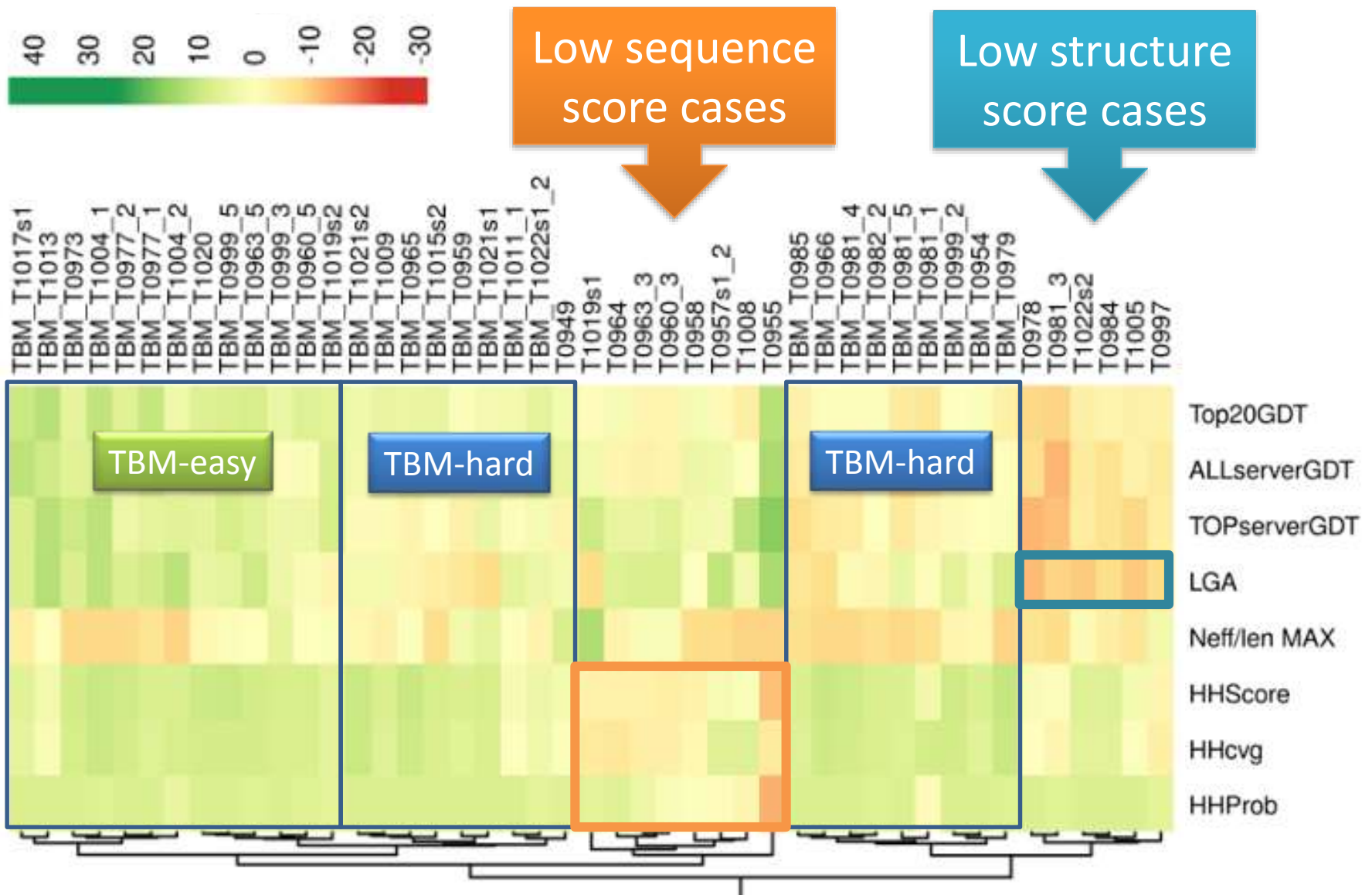
Boundary EVU Clusters Define Categories 2



Does Neff improve TBM-hard Performance?



Boundary EVU Clusters Require Inspection²



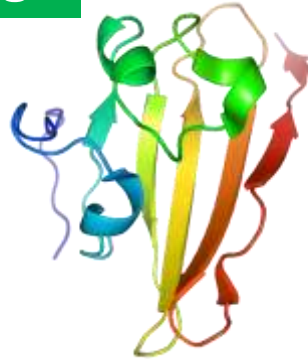
Boundary Cases: Low Sequence Score Examples²

Homologs



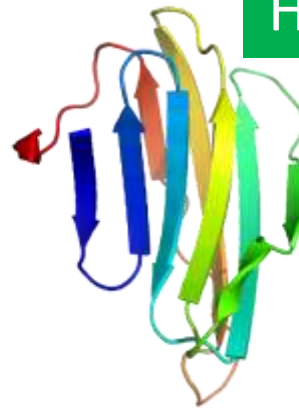
T0960_3/T0963_3

HPRED 82% (0.54) LGA 83.2



Top LGA: 5nxfB

Homologs



T0964

HHPRED 98% (0.47) LGA 81.2



Top LGA: 5t7aA

Homologs

CASP:
Image redacted



T01019s1

Top Hhpred: 6rxnA
(permuted rubredoxin) rubredoxin

HHPRED 95.6% (0.5) LGA 54.3

Homologs



T0958

(SSE shifts in HTH)

HHPRED 81.4% (0.59) LGA 69.2



Top HHpred: 2kim

HTH

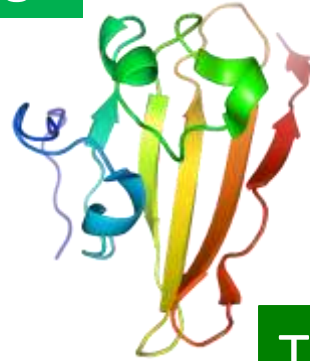
Boundary Cases: Low Sequence Score Examples²

Homologs



T0960_3/T0963_3

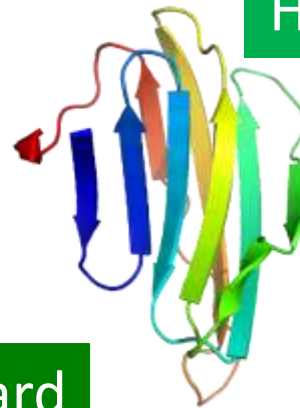
HPRED 82% (0.54) LGA 83.2



Top LGA: 5nxt

TBM-hard

Homologs



T0964

HHPRED 98% (0.47) LGA 81.2



Top LGA: 5t7aA

Homologs

CASP:
Image redacted



T01019s1

Top Hhpred: 6rx
(permuted rubredoxin) rubredoxin

HHPRED 95.6% (0.5) LGA 54.3

TBM/FM

Homologs



T0958

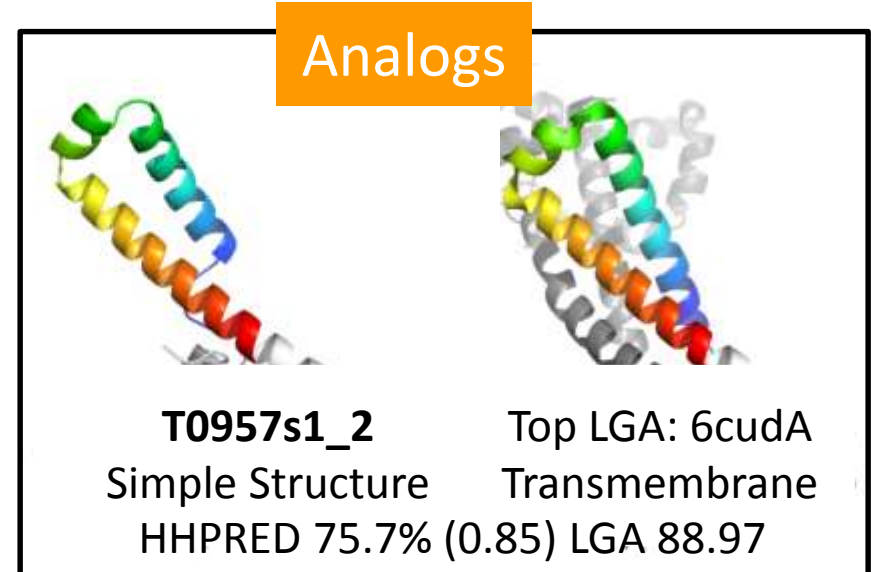
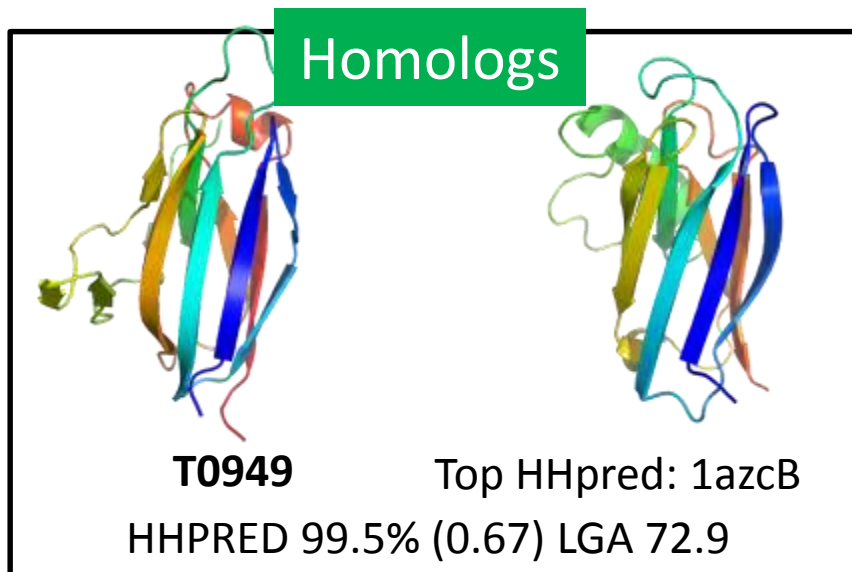
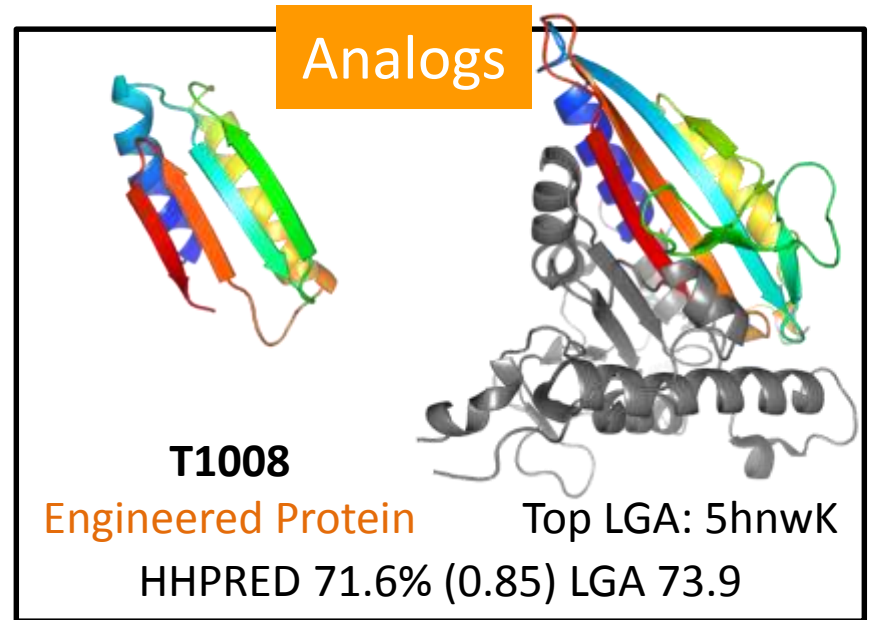
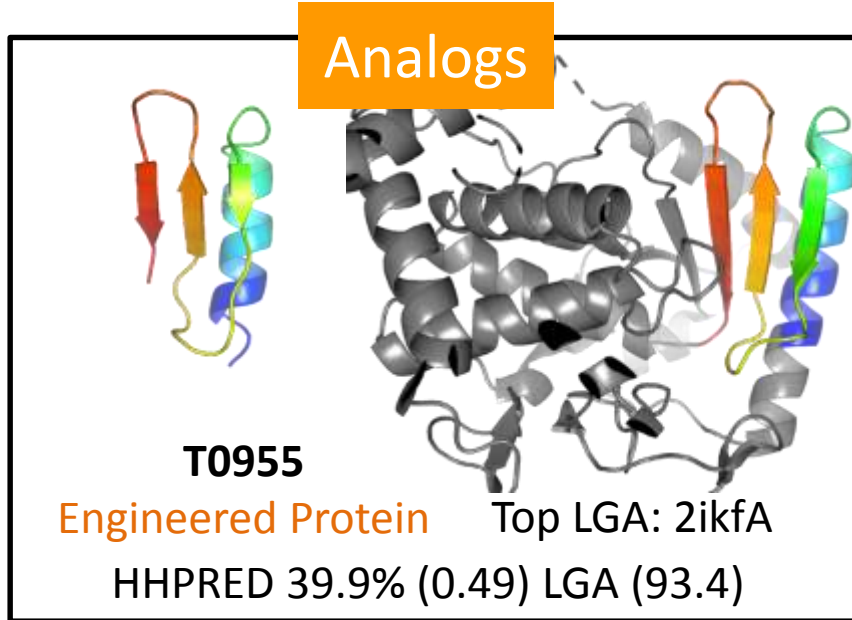
(SSE shifts in HTH)

HHPRED 81.4% (0.59) LGA 69.2

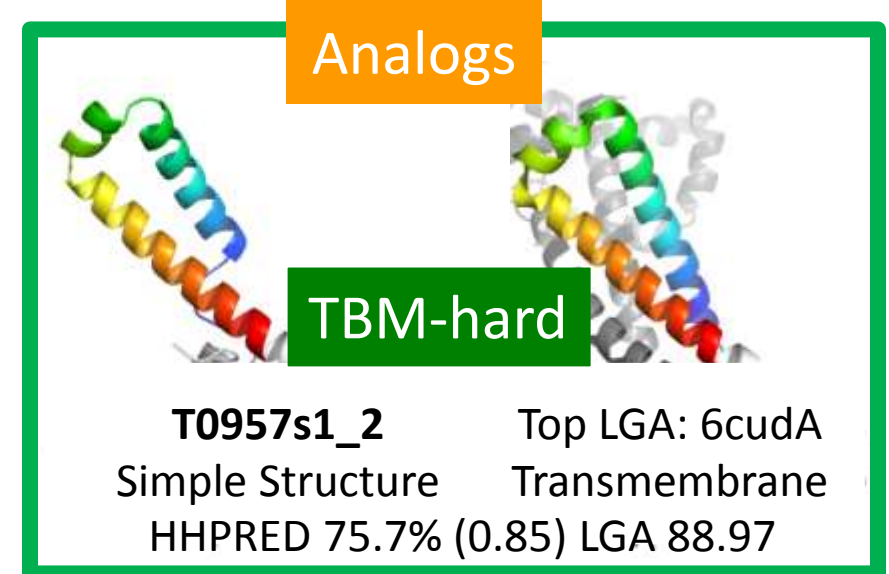
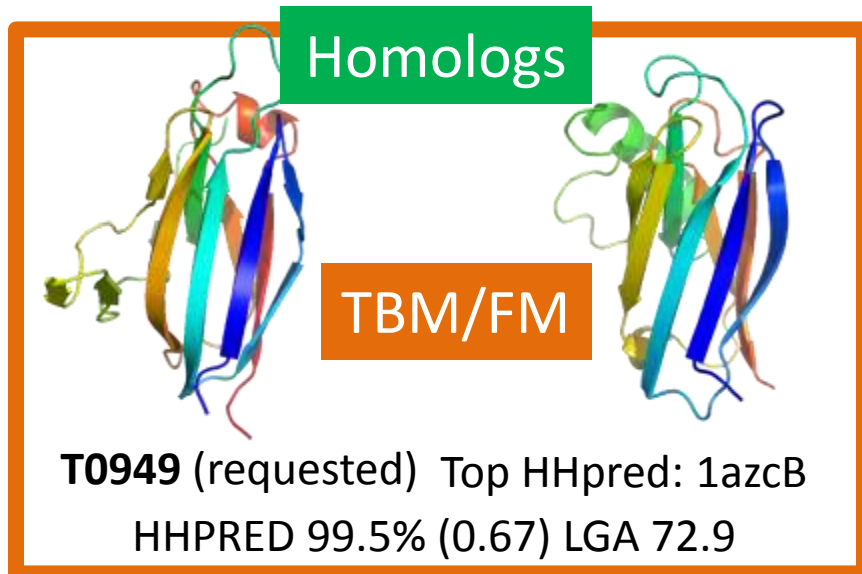
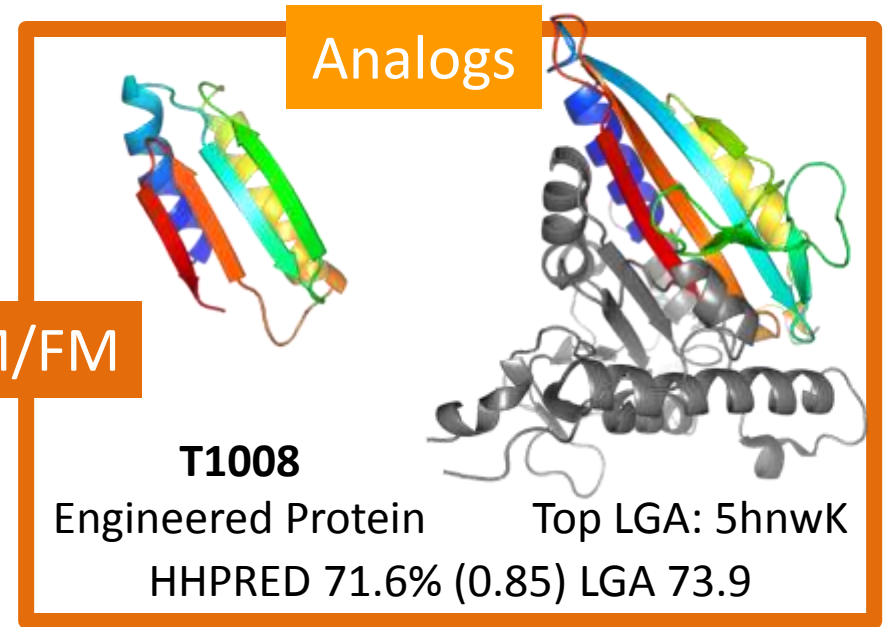
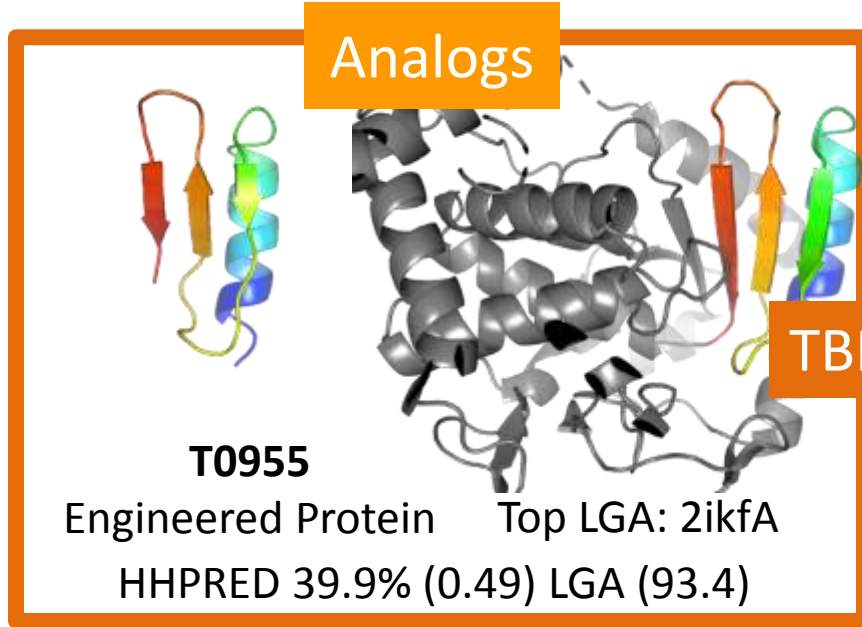


Top HHPred: 2kim
HTH

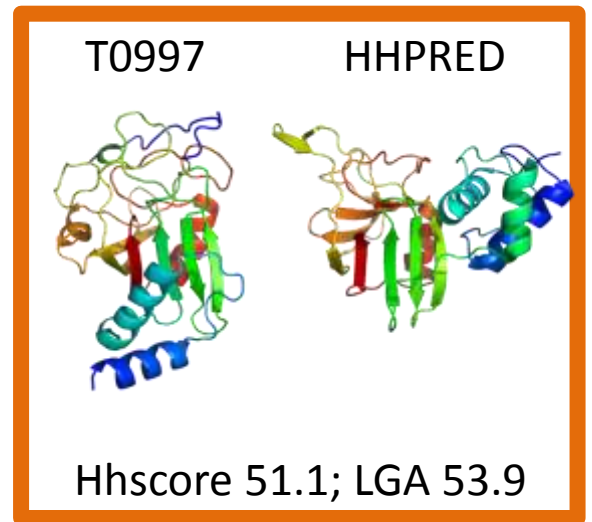
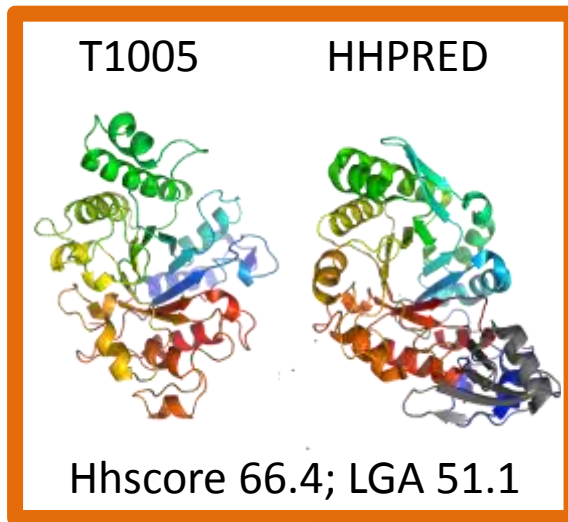
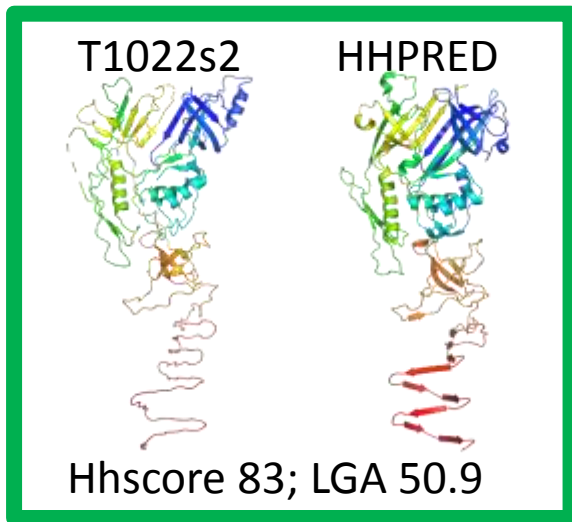
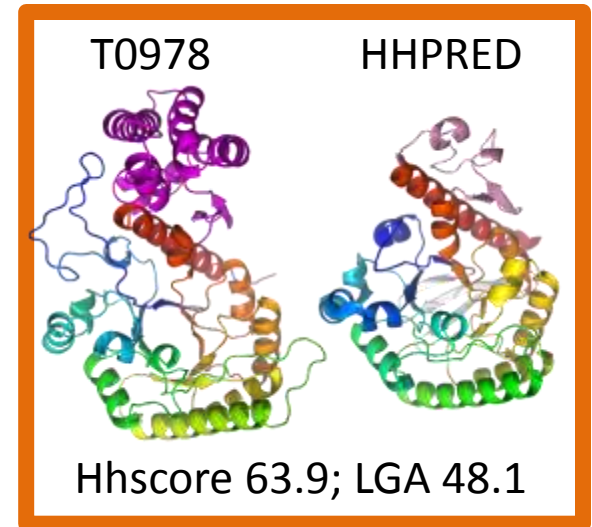
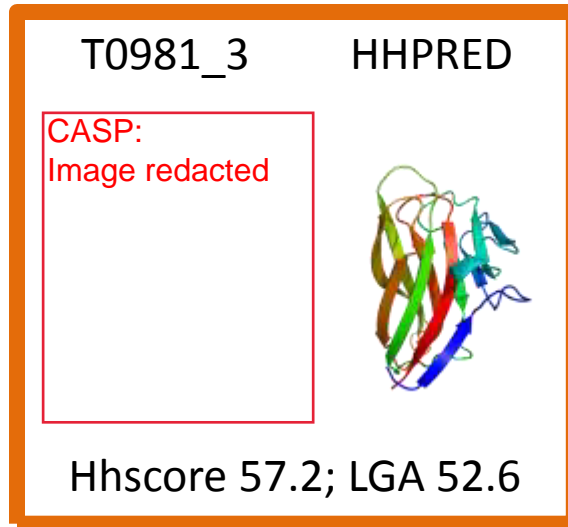
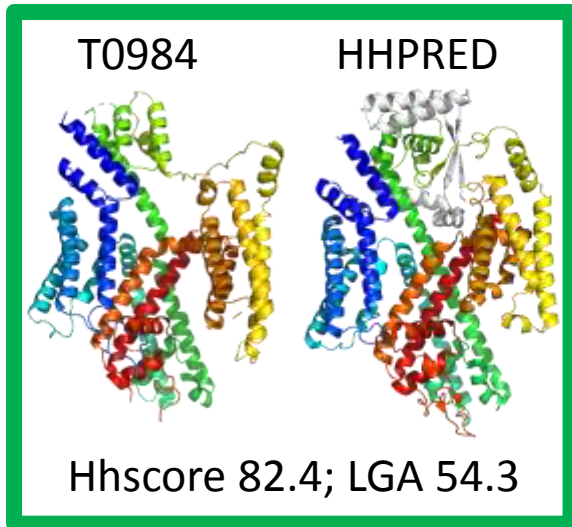
Boundary Cases: Low Sequence Score Examples²



Boundary Cases: Low Sequence Score Examples²



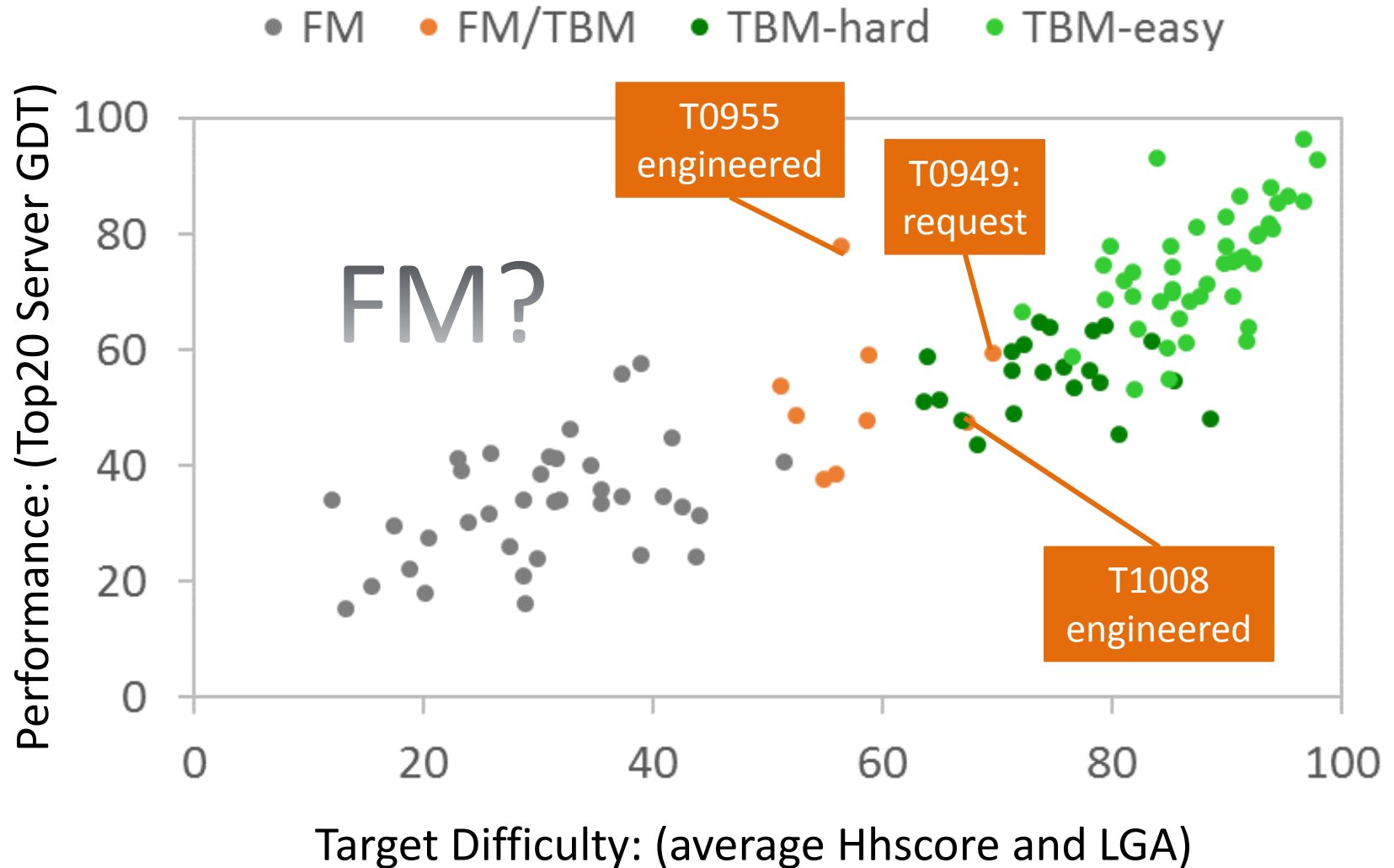
Boundary Cases: Low Structure Score Examples 2



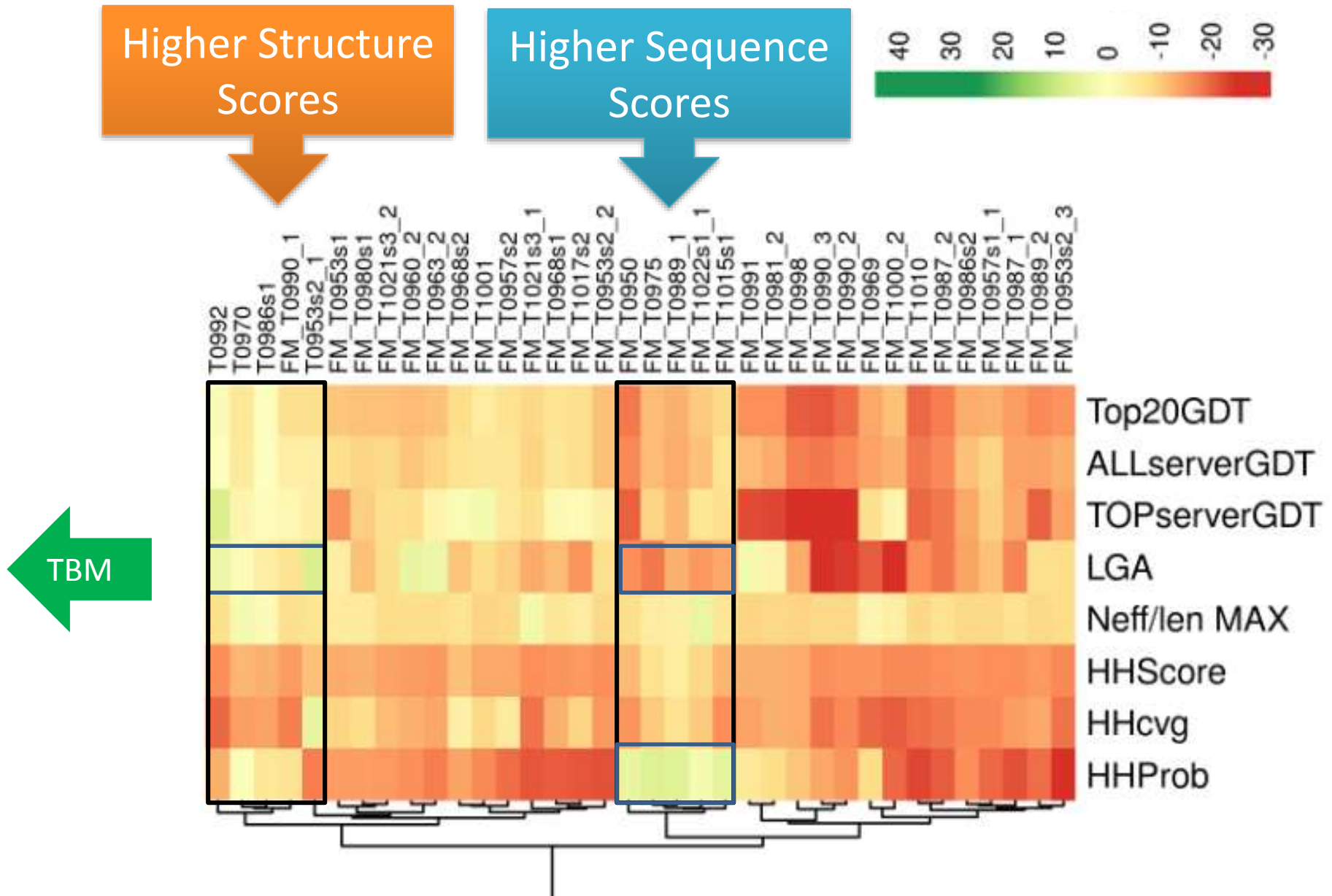
TBM-hard
Relatively small insertions

TBM/FM
More insertions/SSE shifts

Assigned Boundary Cases Mapped To Plot 2



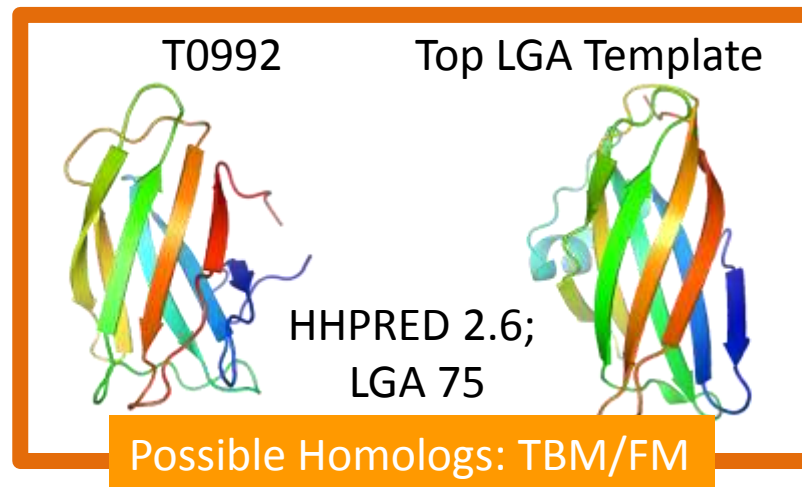
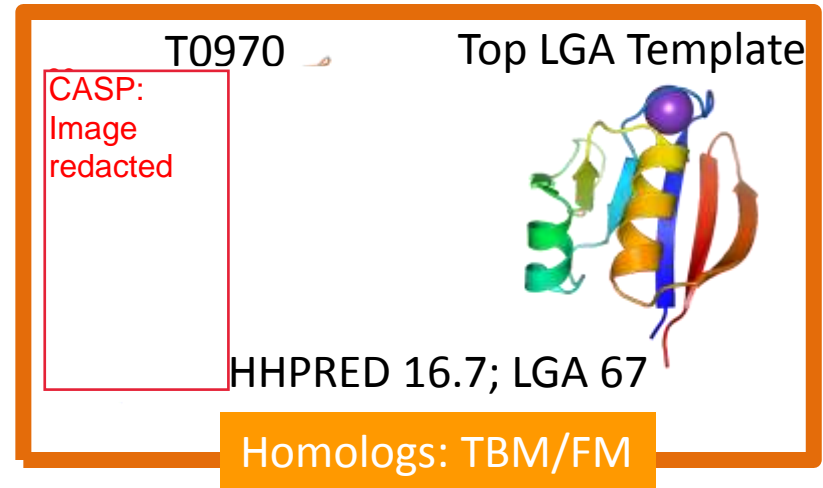
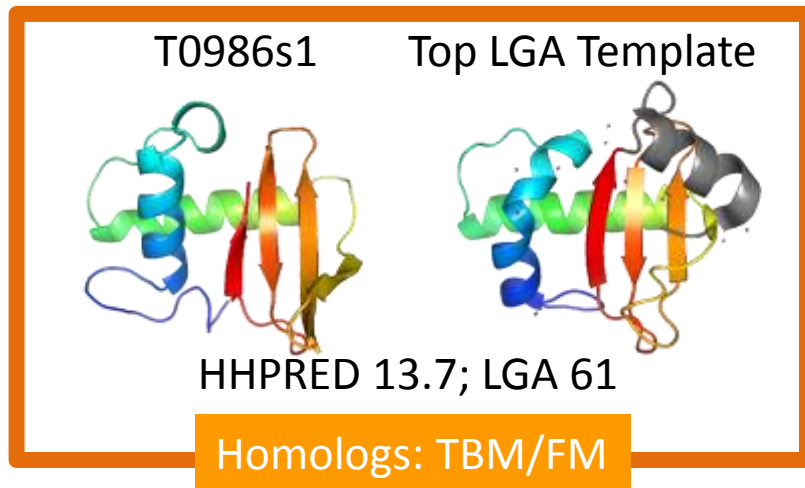
FM Boundary EVU Clusters Require Inspection 2



FM Boundary: High Structure Score Examples

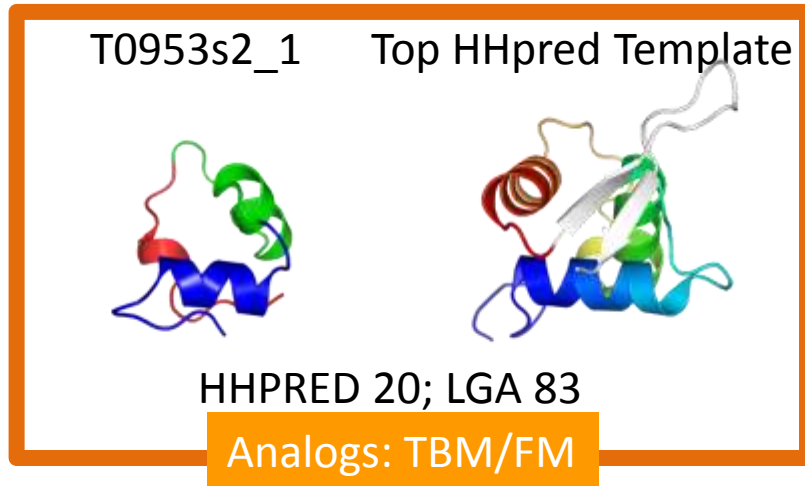
2

Templates Identified by Some Servers

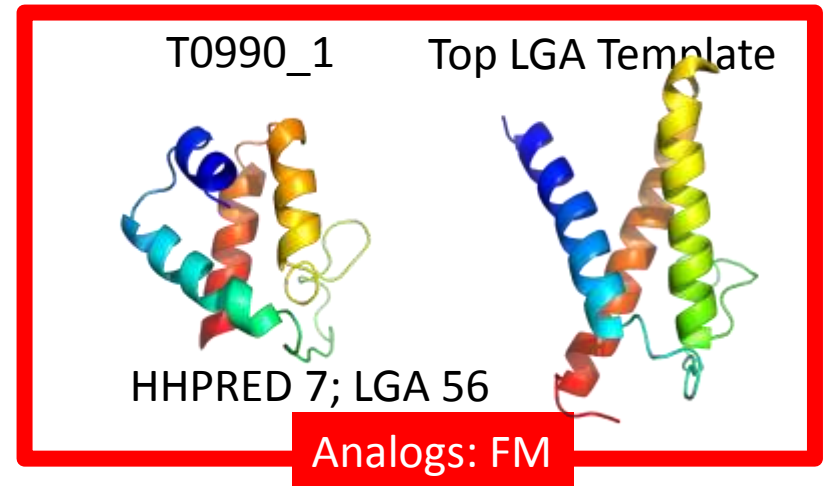


FM Boundary: High Structure Score Examples

2



Simple HHPred Structure
Template

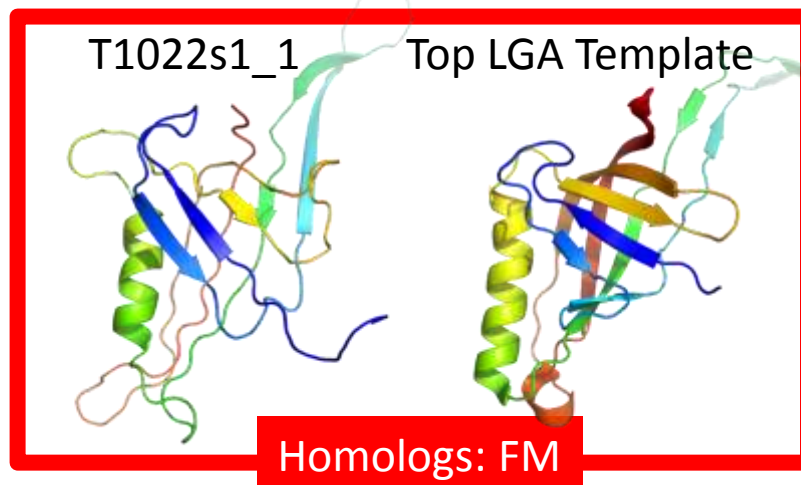
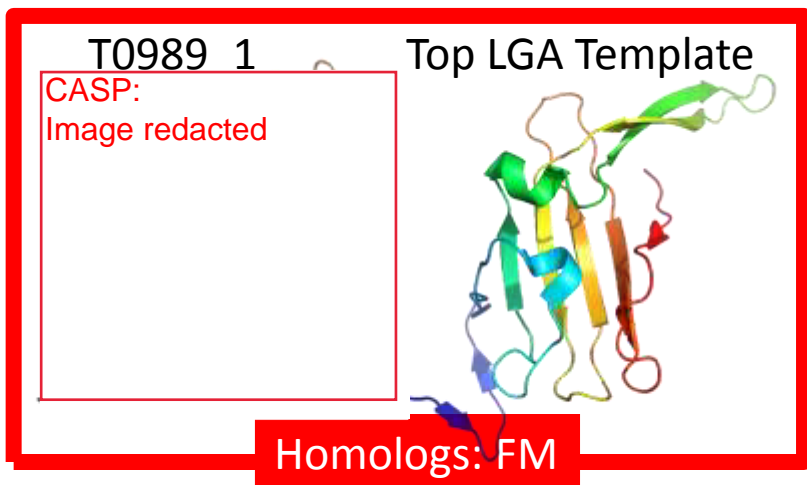
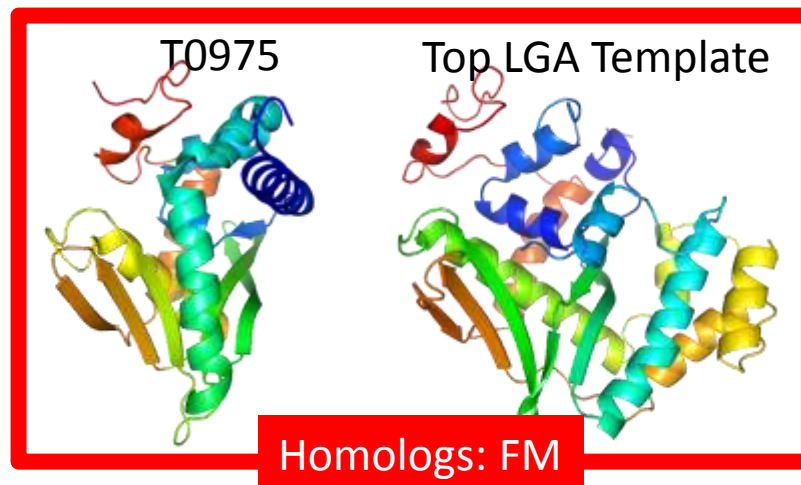
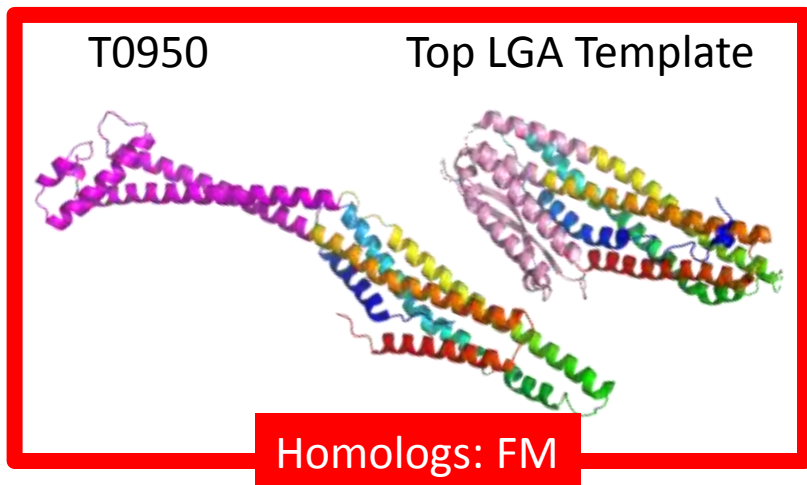


Poor HHPred Structure
Template; Top LGA not found

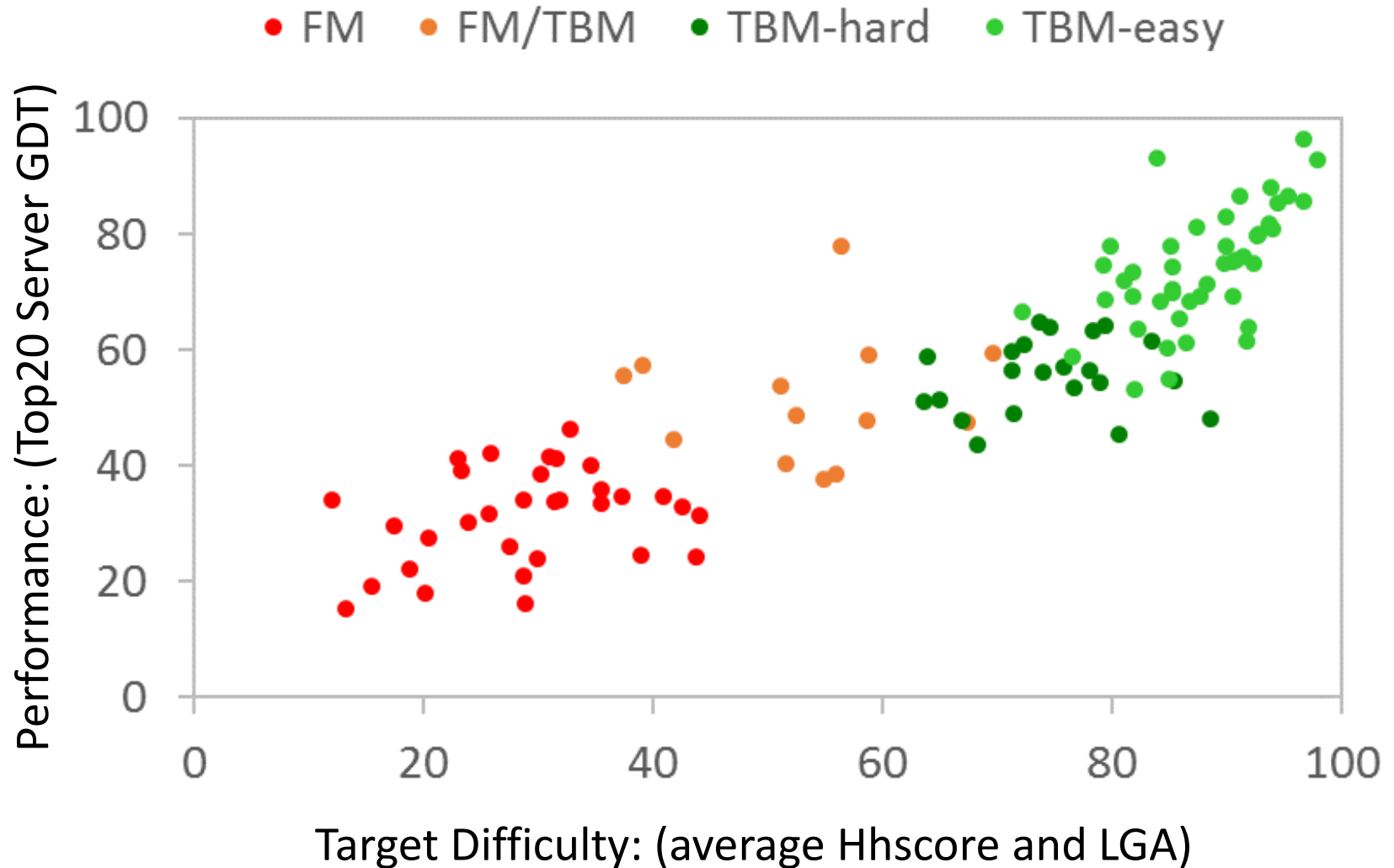
FM Boundary: High Sequence Score Examples

2

Conformation changes; movement of SSEs; insertions



Assigned Boundary Cases Mapped To Plot 2



The END

